



Fall 2018 Propensity Update

JAMRS

Public Release



Youth Poll: Propensity

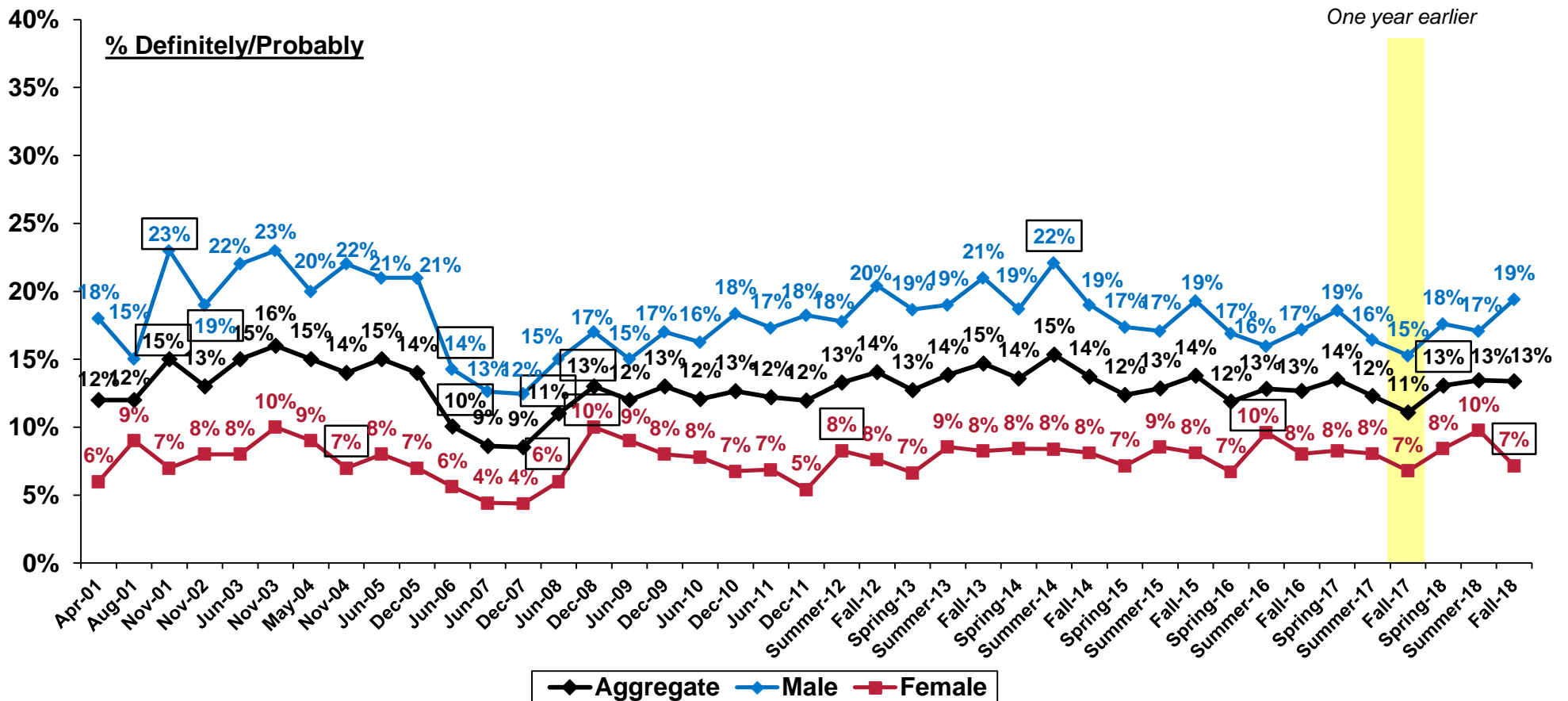
General Military Propensity

By Gender

FPP9: In the next few years, how likely is it that you will be serving in the Military?

Response options: Definitely, Probably, Probably Not, Definitely Not

- General military propensity has stayed consistent at an aggregate level in 2018. However, female propensity decreased significantly from Summer 2018 to Fall 2018, while male propensity significantly increased from Fall 2017 to Fall 2018.



Note: Youth ages 16–21. Estimates are charted to precise values. Labels are rounded to the nearest whole percent.

Source: DoD Youth Poll



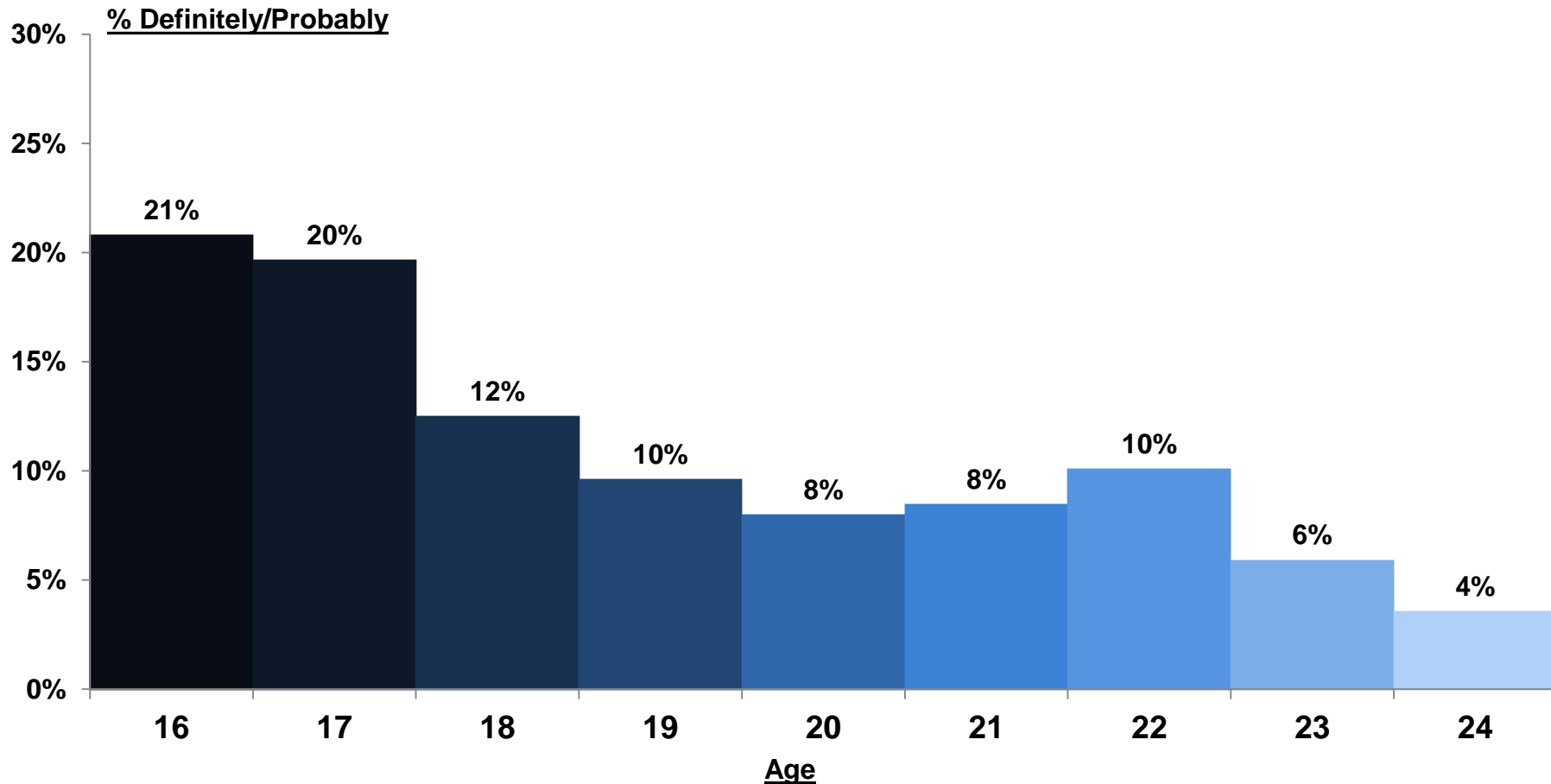
□ = Significant change from previous poll

General Military Propensity

By Age

FPP9: How likely is it that you will be serving in the Military in the next few years?

Response options: Definitely, Probably, Probably Not, Definitely Not



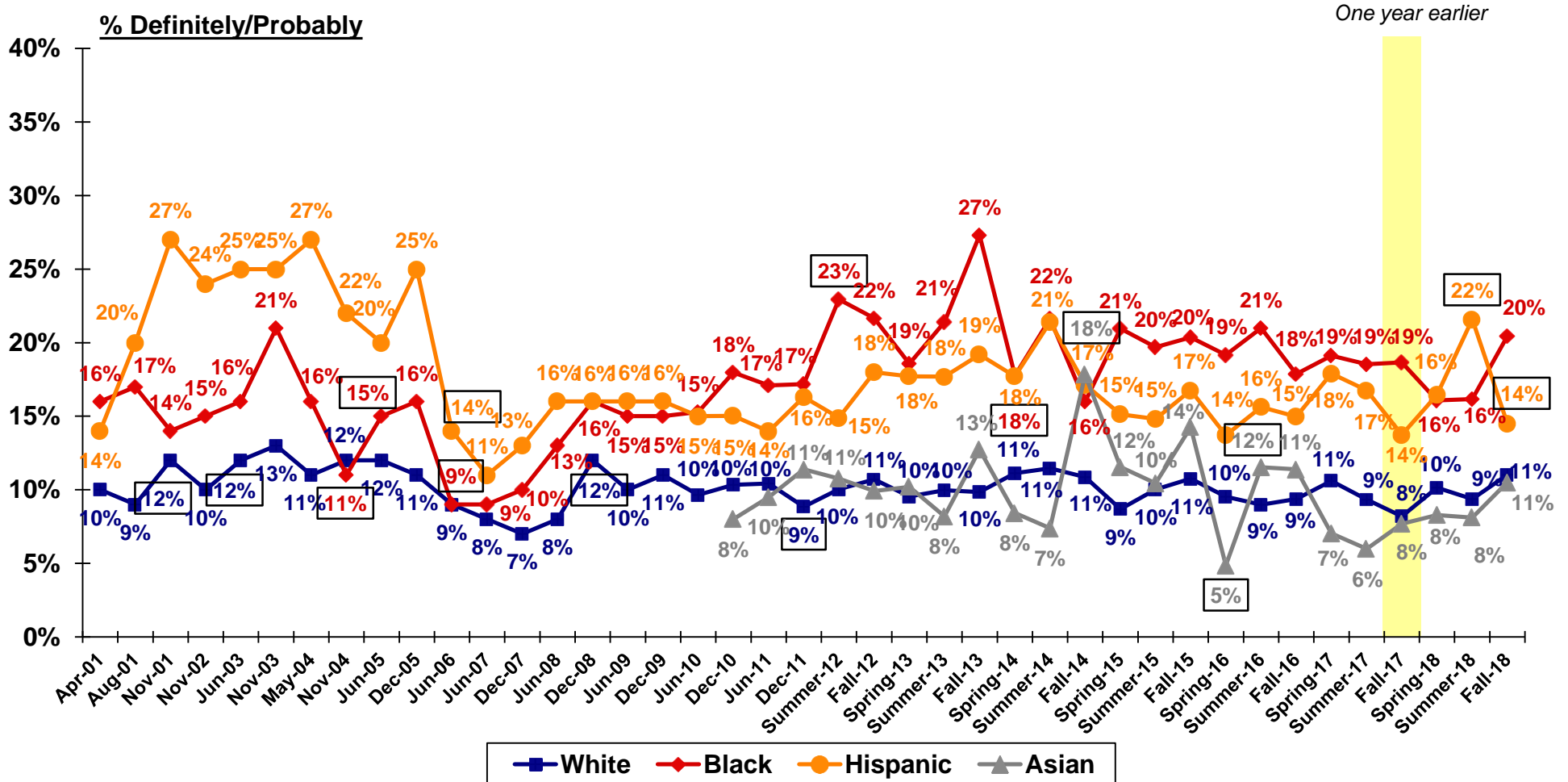
Note: Estimates are charted to precise values.
Labels are rounded to the nearest whole percent.
Source: DoD Youth Poll (Fall 2018)

General Military Propensity

By Race/Ethnicity

FPP9: In the next few years, how likely is it that you will be serving in the Military?

Response options: Definitely, Probably, Probably Not, Definitely Not



Note: Youth ages 16–21. Estimates are charted to precise values. Labels are rounded to the nearest whole percent.

Source: DoD Youth Poll



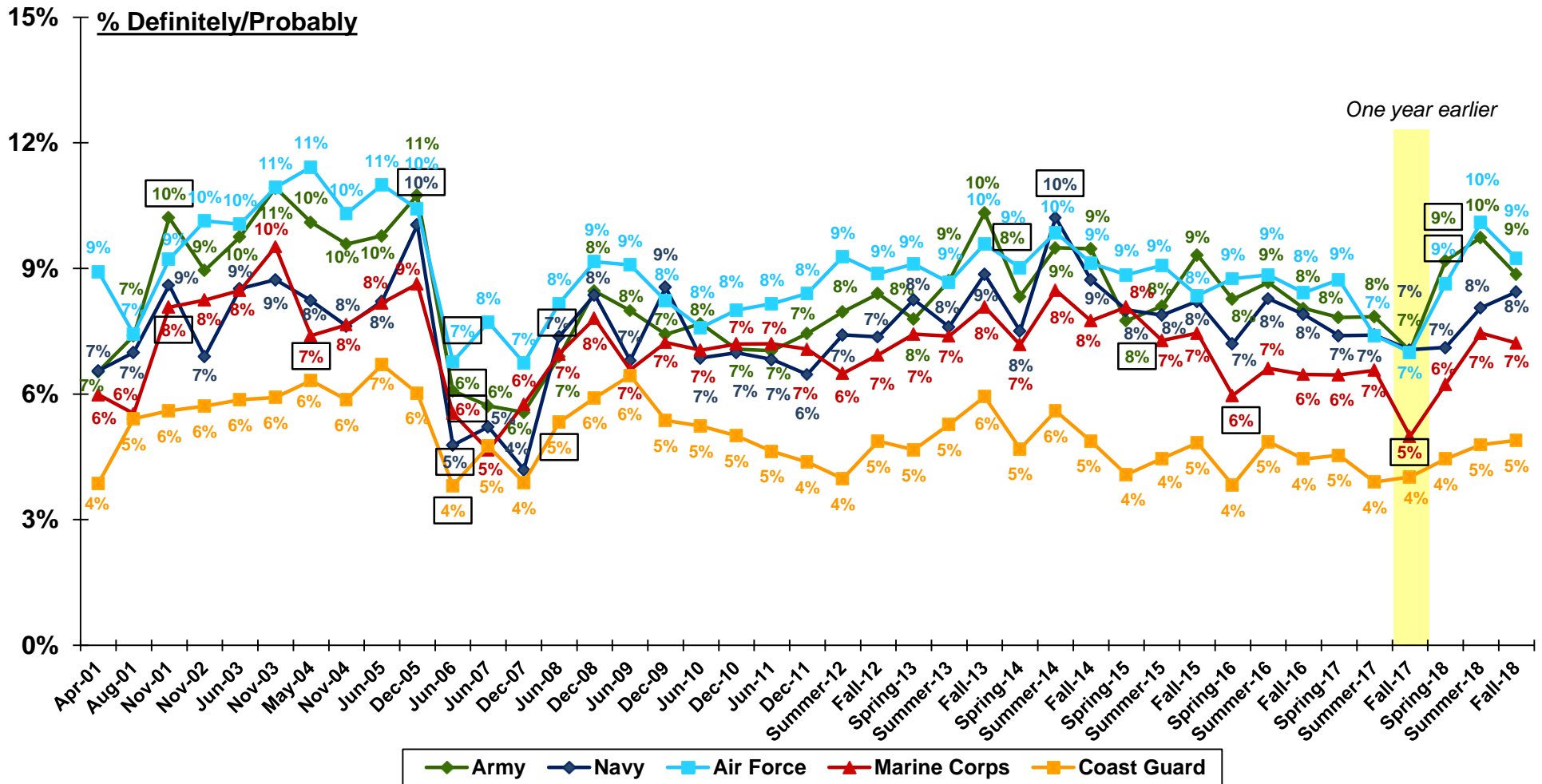
□ = Significant change from previous poll

Note: Estimates for Black and Asian youth should be interpreted with caution because of relatively large margins of error.

Active Duty Propensity by Service

FPP10A_Q-FPP10E_Q: In the next few years, how likely is it that you will be serving in each of the following Military Services?

Response options: Definitely, Probably, Probably Not, Definitely Not



Note: Youth ages 16-21. Estimates are charted to precise values. Labels are rounded to the nearest whole percent.

Source: DoD Youth Poll



= Significant change from previous poll



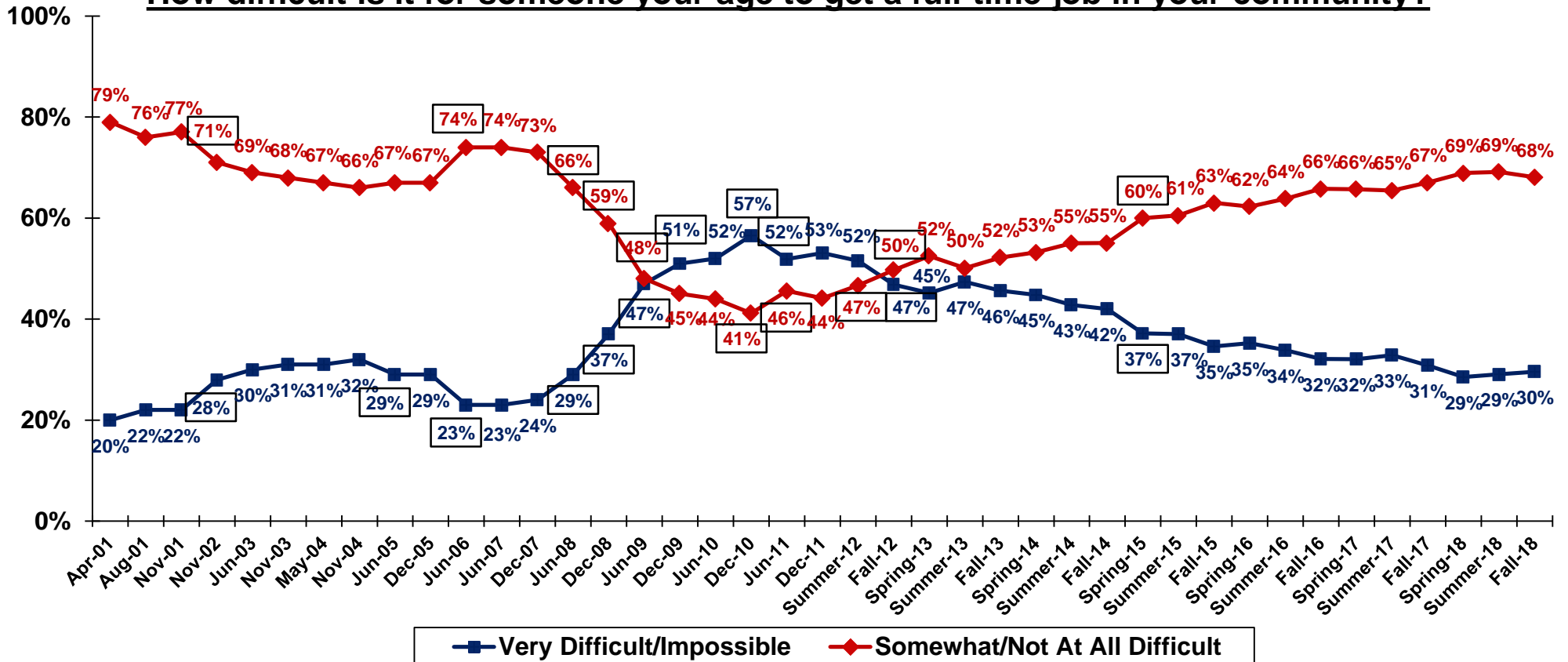
Youth Poll: Economic Conditions

U.S. Military and Economic Conditions

Difficulty of Finding a Job

- As unemployment rates continue to decline, youth are confident in their ability to find full-time employment.

How difficult is it for someone your age to get a full-time job in your community?



Note: Youth ages 16–21. Estimates are charted to precise values. Labels are rounded to the nearest whole percent.

Source: DoD Youth Poll

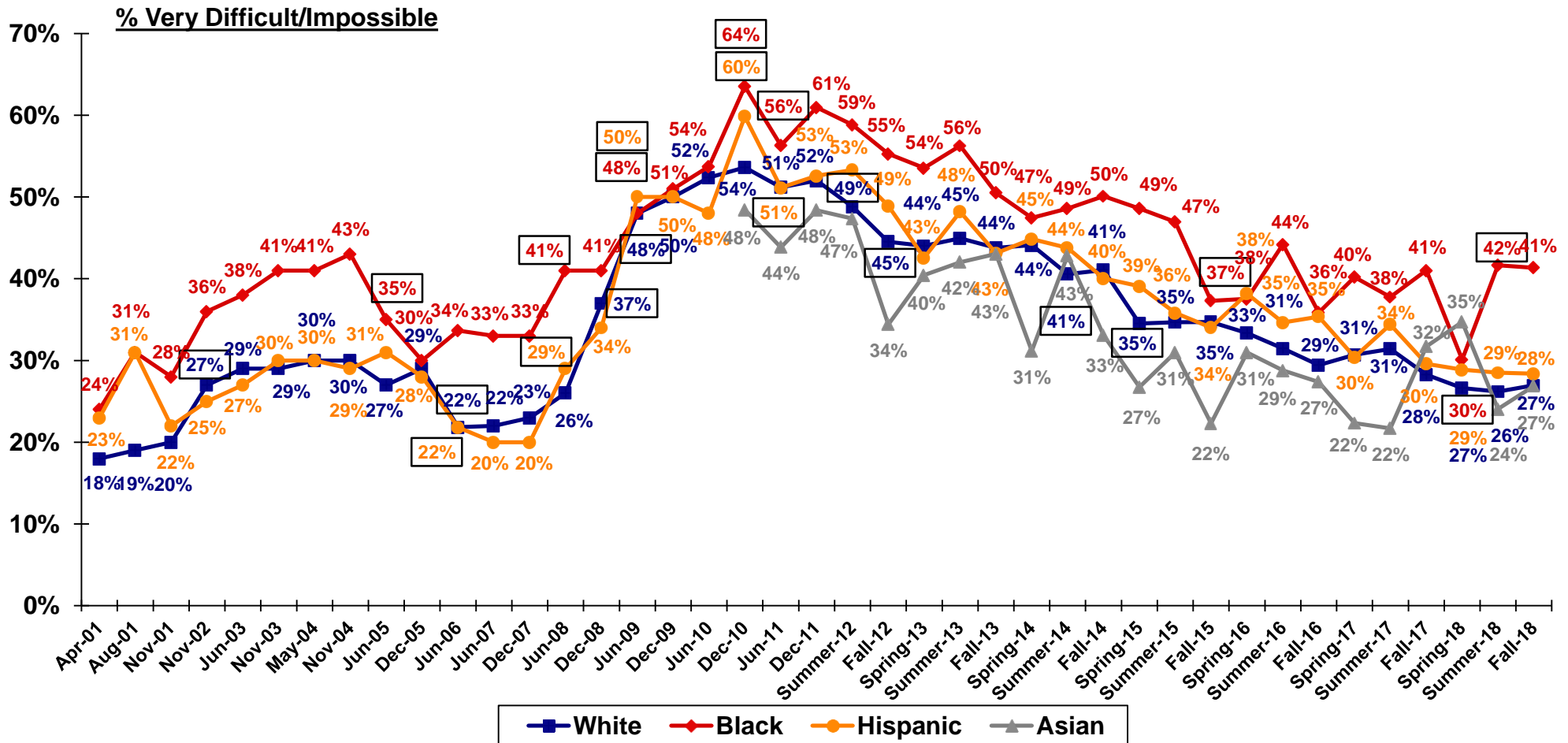


☐ = Significant change from previous poll

U.S. Military and Economic Conditions

Difficulty of Finding a Job by Race/Ethnicity

- Black youth are more likely than any other racial/ethnicity group to report difficulty in finding a full-time job.



Note: Youth ages 16–21. Estimates are charted to precise values. Labels are rounded to the nearest whole percent.

Source: DoD Youth Poll

JAMRS

□ = Significant change from previous poll

Note: Estimates for Black and Asian youth should be interpreted with caution because of relatively large margins of error.
 EMP5: "How difficult is it for someone your age to get a full-time job in your community?"



Backup

Youth Poll Methodology and Sample

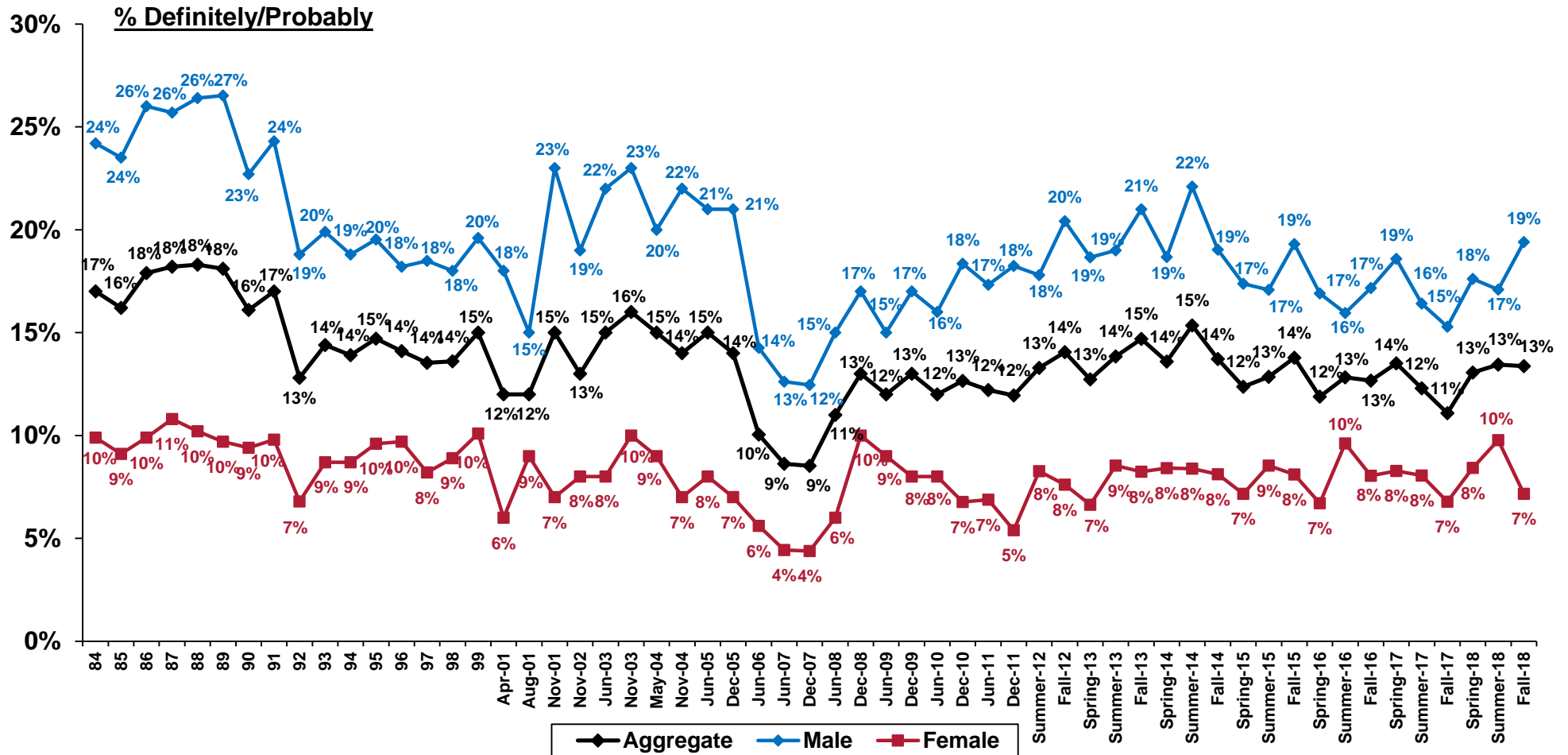
- Mail-based survey fielded from August 31, 2018 to February 28, 2019.
 - A series of five mailings were sent to eight different cohorts semimonthly that invited recipients to participate.
- Final Youth Poll Sample: 5,099 youth aged 16 through 24
 - 4,051 youth aged 16 through 21 – the metrics presented herein focus on this age group.
 - 1,048 youth aged 22 through 24
- Weighted to reflect general population on several dimensions:
 - Gender
 - Age
 - Race/Ethnicity
 - Educational Attainment
 - Region
- Stratified Random Sample
- Note: Estimates are charted to precise values. Labels are rounded to the nearest whole percent.
- Note: Certain slides provide estimates by race/ethnicity.
 - The December 2010 effort was the first Youth Poll with a sufficiently large sample size to report estimates for Asian youth. Asian estimates are included only at the overall level and not by gender because of sample size restrictions. The effective sample size for Asian youth is small and results should be interpreted cautiously.

Historical General Military Propensity

By Gender

FPP9: In the next few years, how likely is it that you will be serving in the Military?

Response options: Definitely, Probably, Probably Not, Definitely Not



Note: Youth ages 16–21. Estimates are charted to precise values. Labels are rounded to the nearest whole percent.

Source: DoD YATS and Youth Poll

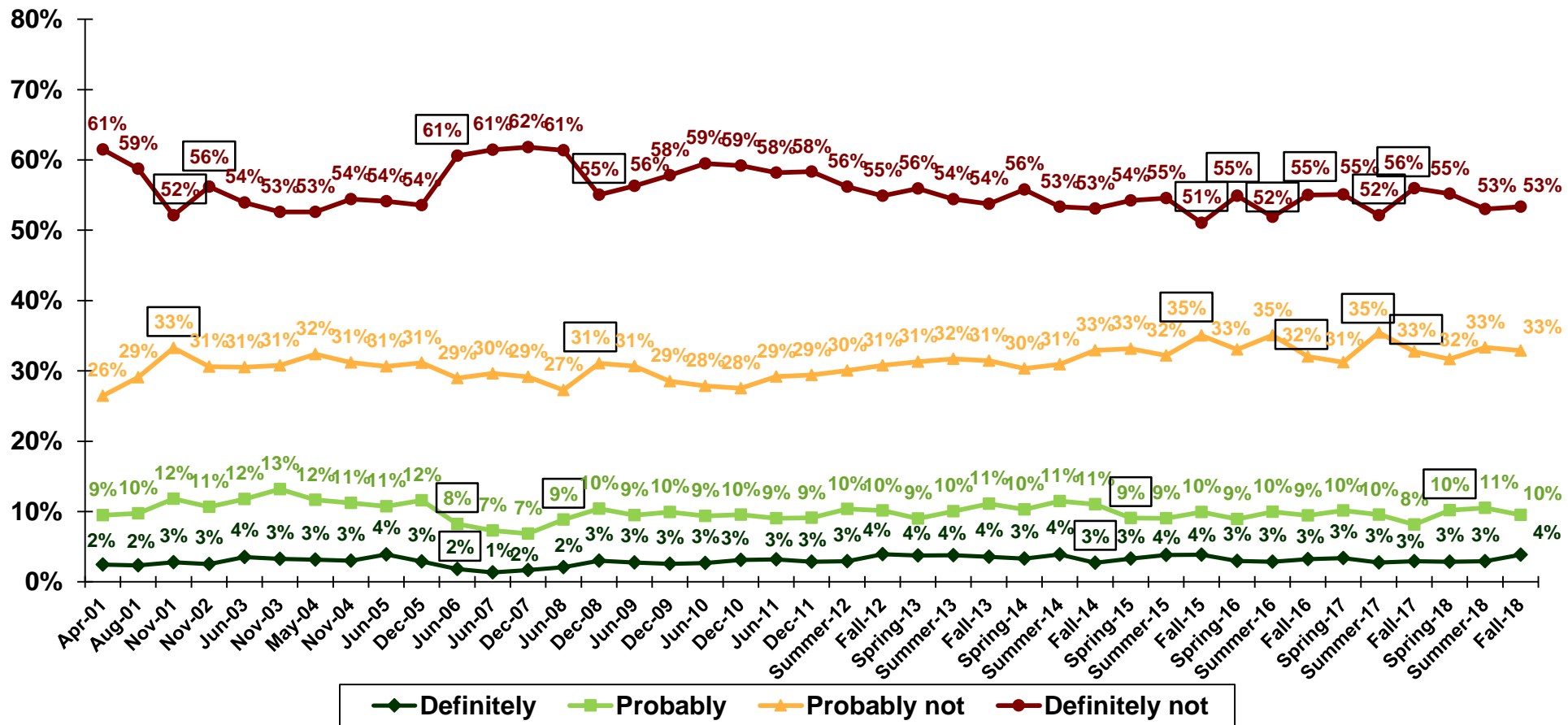


Questions: YATS (Q503)–Jun-10 (FPP9): “Now, I’d like to ask you how likely it is that you will be serving in the Military in the next few years?”
 Dec-10–Onwards (FPP9): “In the next few years, how likely is it that you will be serving in the Military?”

General Military Propensity

FPP9: How likely is it that you will be serving in the Military in the next few years?

Response options: Definitely, Probably, Probably Not, Definitely Not



Note: Youth ages 16–21. Estimates are charted to precise values. Labels are rounded to the nearest whole percent.

Source: DoD Youth Poll



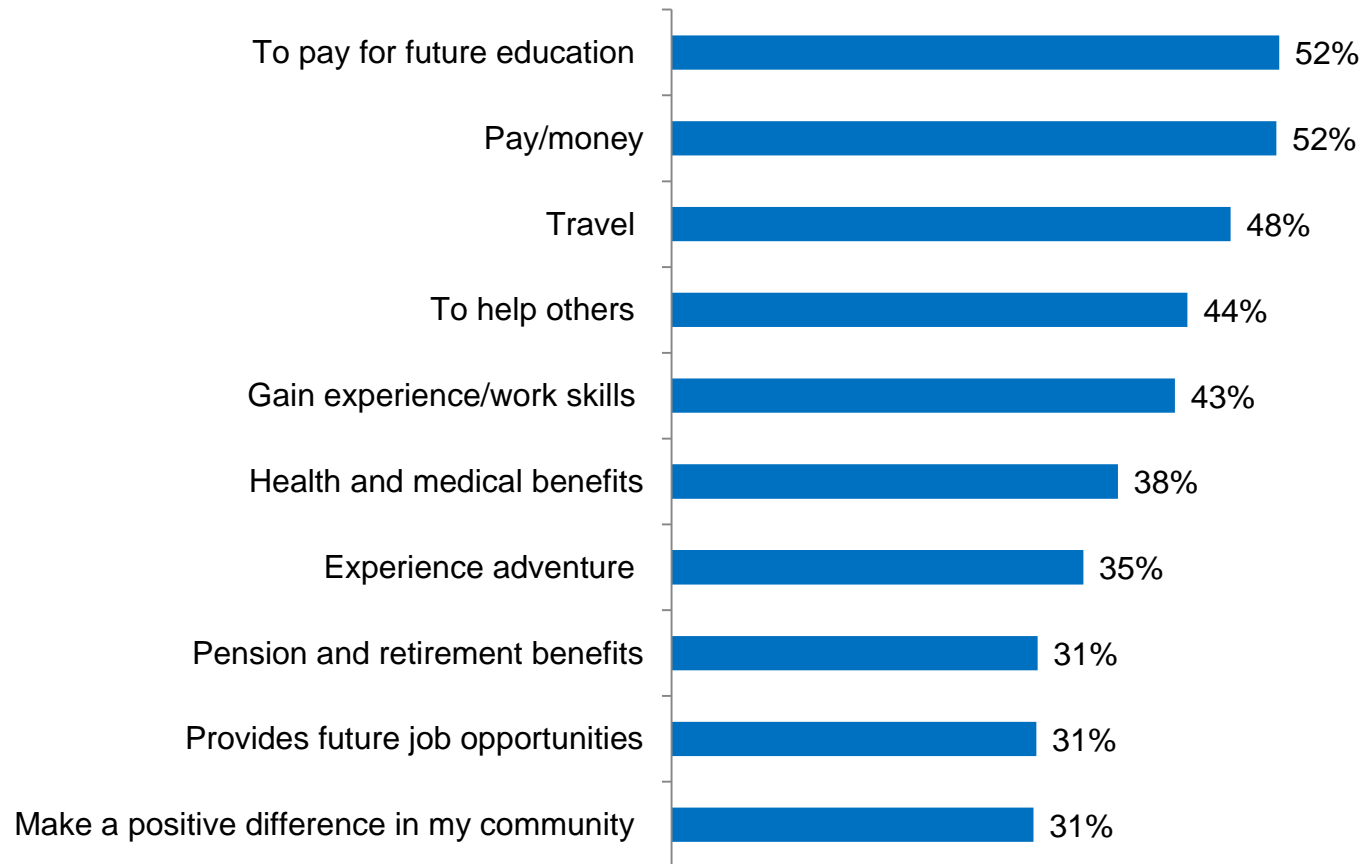
☐ = Significant change from previous poll

Reasons to Join

RTJ: if you were to consider joining the U.S. Military, what would be the main reason(s)?

Response options: Yes, multiple response

Top 10 Reasons



Note: Youth ages 16–21.

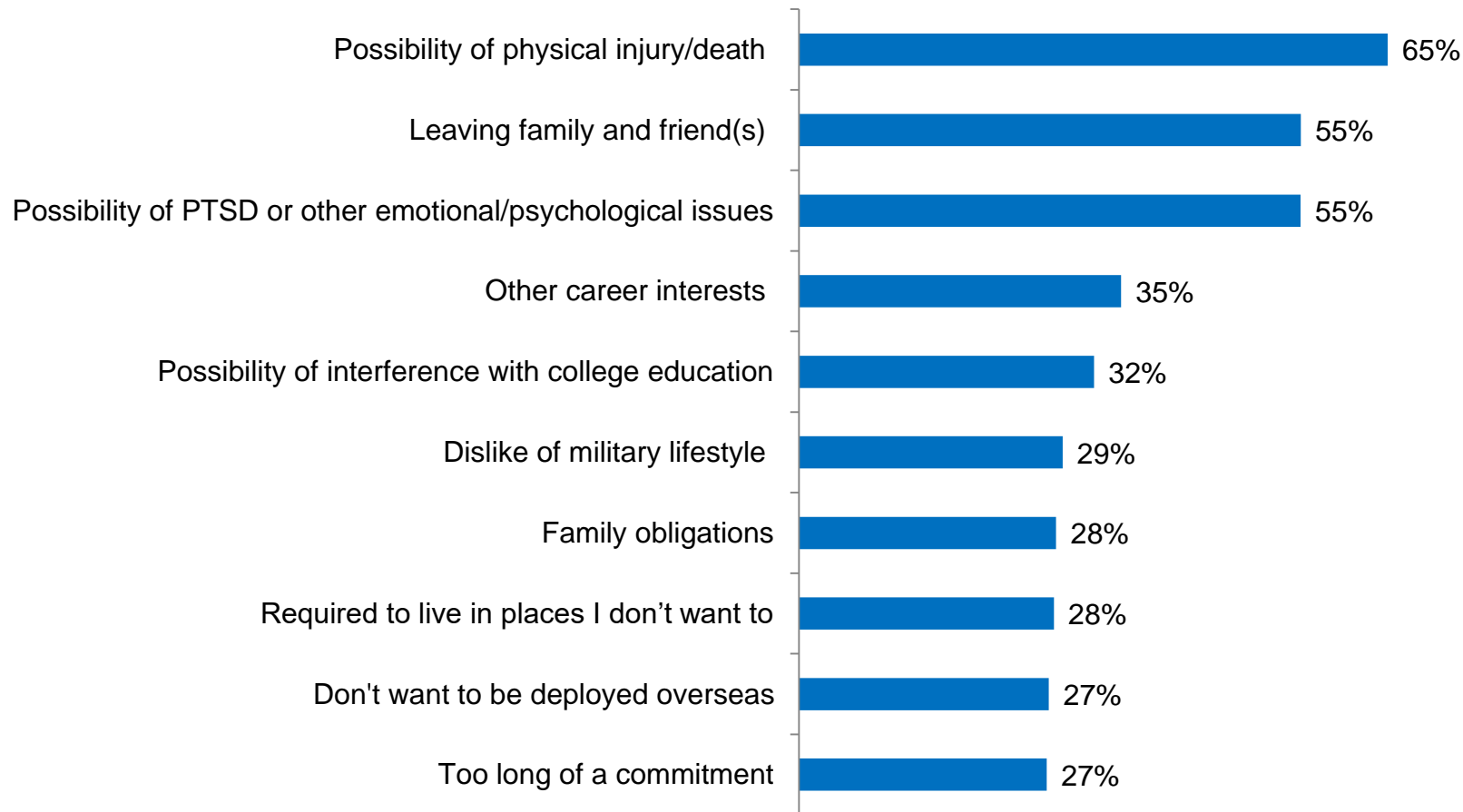
Source: DoD Youth Poll (Fall 2018)

Reasons Not to Join

RNTJ: What would be the main reason(s) why you would NOT consider joining the U.S. Military?

Response options: Yes, multiple response

Top 10 Reasons



Note: Youth ages 16–21.

Source: DoD Youth Poll (Fall 2018)