



Public Release Summer 2024 Propensity Update

Youth Poll Study Findings

CLEARED
For Open Publication

May 13, 2025

Department of Defense
OFFICE OF PREPUBLICATION AND SECURITY REVIEW

SLIDES ONLY
NO SCRIPT PROVIDED

25-P-0728

Fielded:
Apr–Oct 2024



Published:
Apr 2025

General Military Propensity

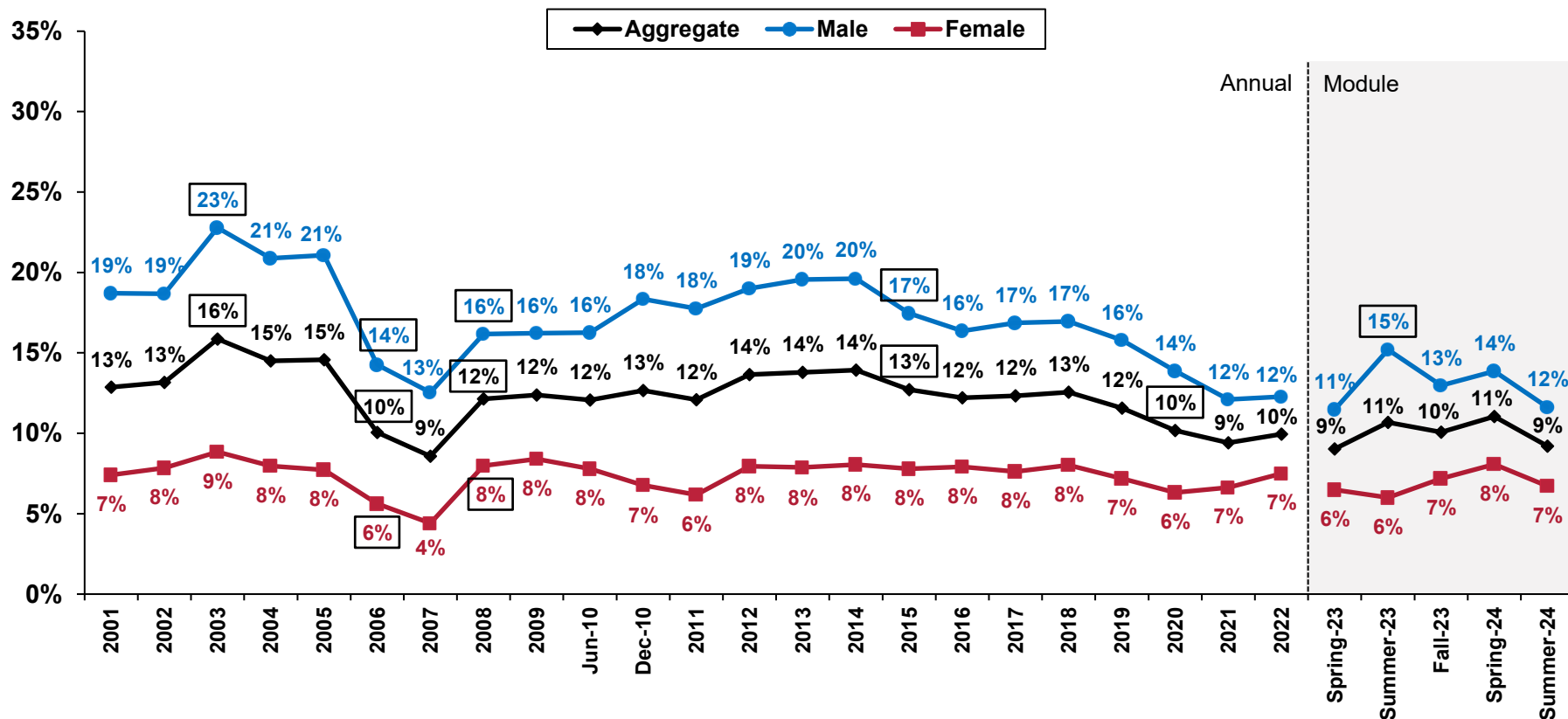
General Military Propensity

By Gender

- Military propensity remained stable from Spring 2024 (11%) to Summer 2024 (9%).

In the next few years, how likely is it that you will be serving in the Military?

% Definitely/Probably



Note: Youth ages 16–21. Estimates are charted to precise values. Labels are rounded to the nearest whole percent.

Source: DoD Youth Poll

JAMRS

□ = Significant change from previous poll/year

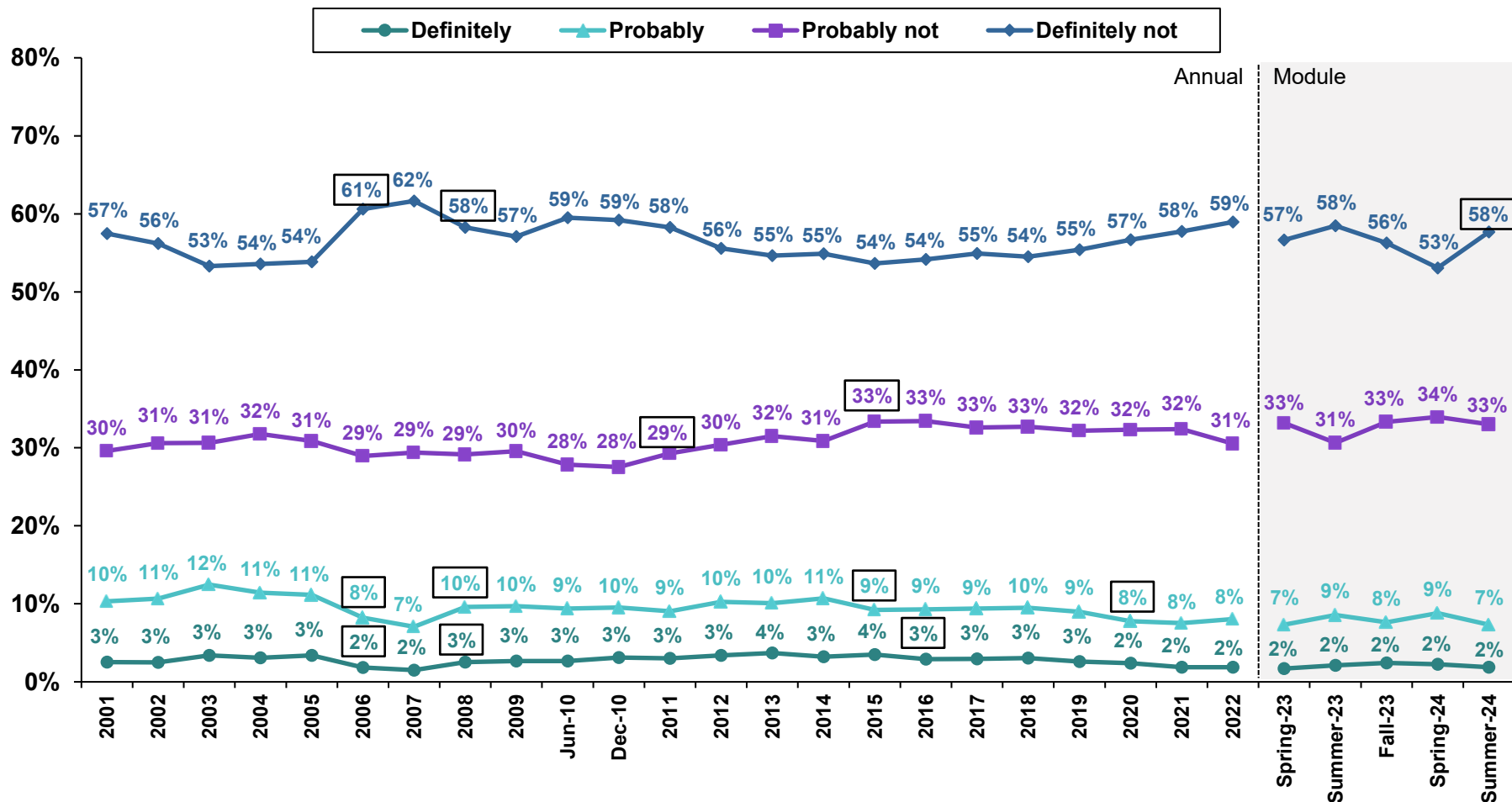
Question: FFP9: "In the next few years, how likely is it that you will be serving in the Military?" Response options: Definitely, Probably, Probably Not, Definitely Not

Note: Survey items were developed prior to Executive Order 14168 "Defending Women from Gender Ideology Extremism and Restoring Biological Truth to the Federal Government" and used the term "gender" interchangeably with "sex" to describe males and females. Future survey items will collect data using a question that asks about participant sex with response options "Male" and "Female."

General Military Propensity

By Response Option

In the next few years, how likely is it that you will be serving in the Military?



Note: Youth ages 16–21. Estimates are charted to precise values. Labels are rounded to the nearest whole percent.

Source: DoD Youth Poll

JAMRS

□ = Significant change from previous poll/year

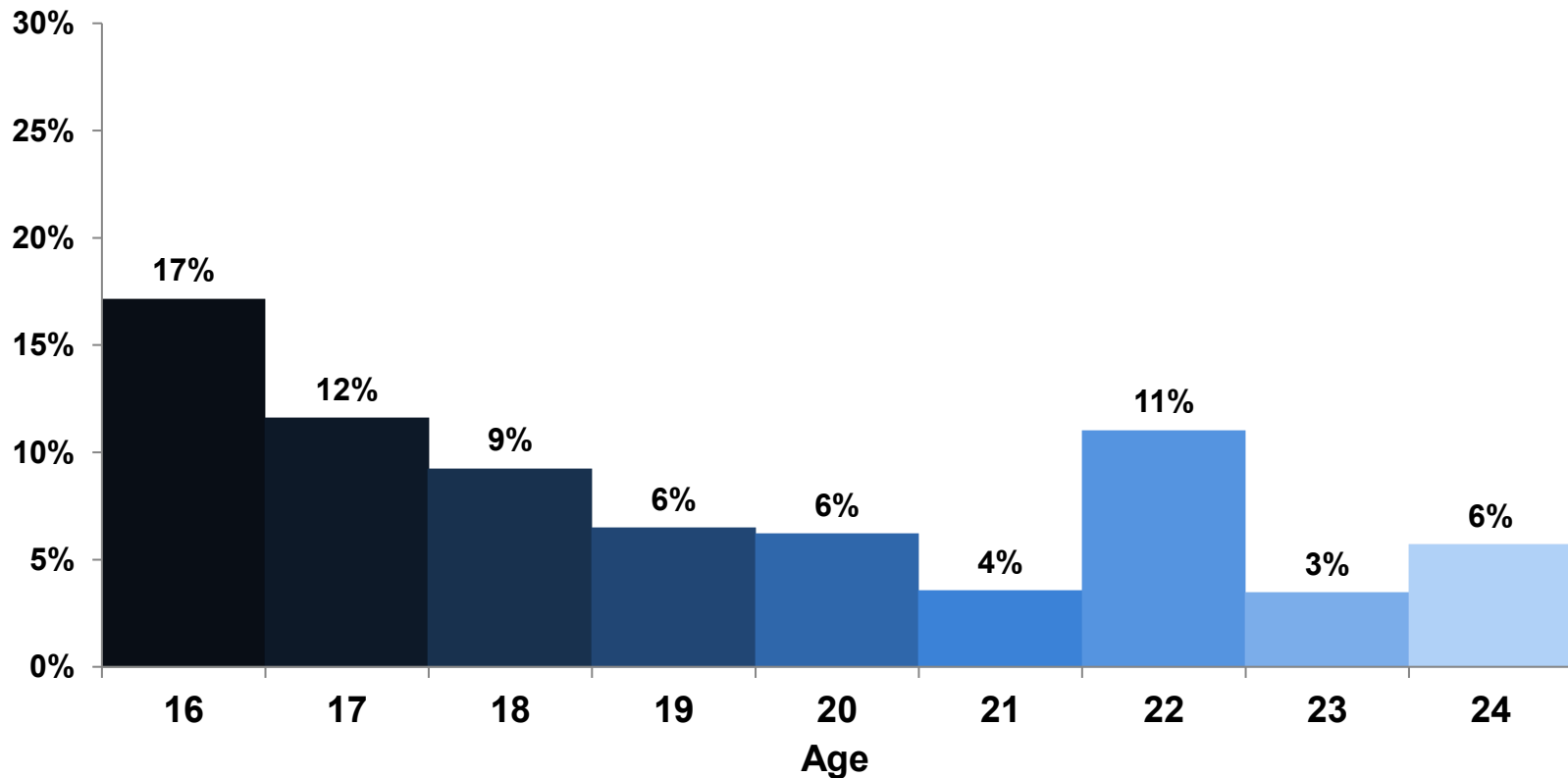
Question: FPP9: "In the next few years, how likely is it that you will be serving in the Military?"

General Military Propensity

By Age

In the next few years, how likely is it that you will be serving in the Military?

% Definitely/Probably



Note: Estimates are charted to precise values.
Labels are rounded to the nearest whole percent.

Source: DoD Youth Poll (Summer 2024)

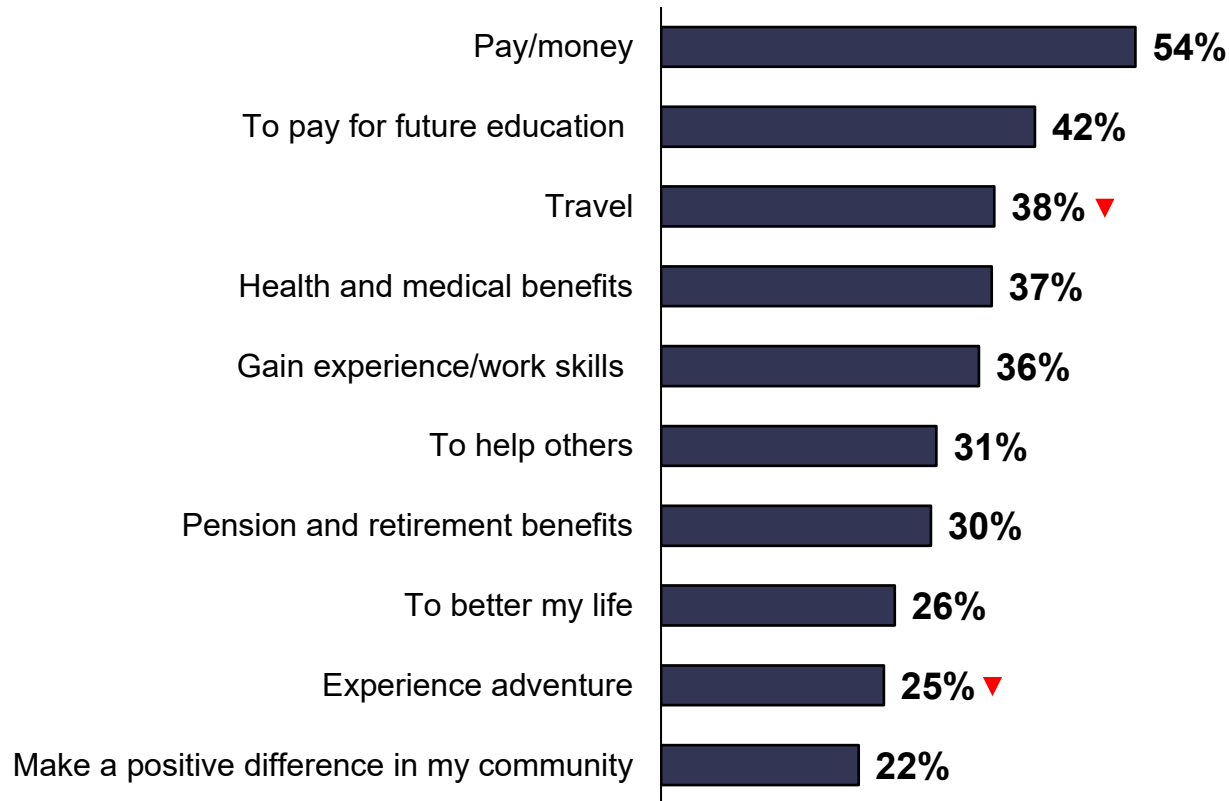
JAMRS

Motivators and Barriers to Service

Motivators Toward Service: Reasons to Join

If you were to consider joining the U.S. Military, what would be the main reason(s)?

Top 10 Reasons



Note: Youth ages 16–21.

Source: DoD Youth Poll (Summer 2024)

JAMRS

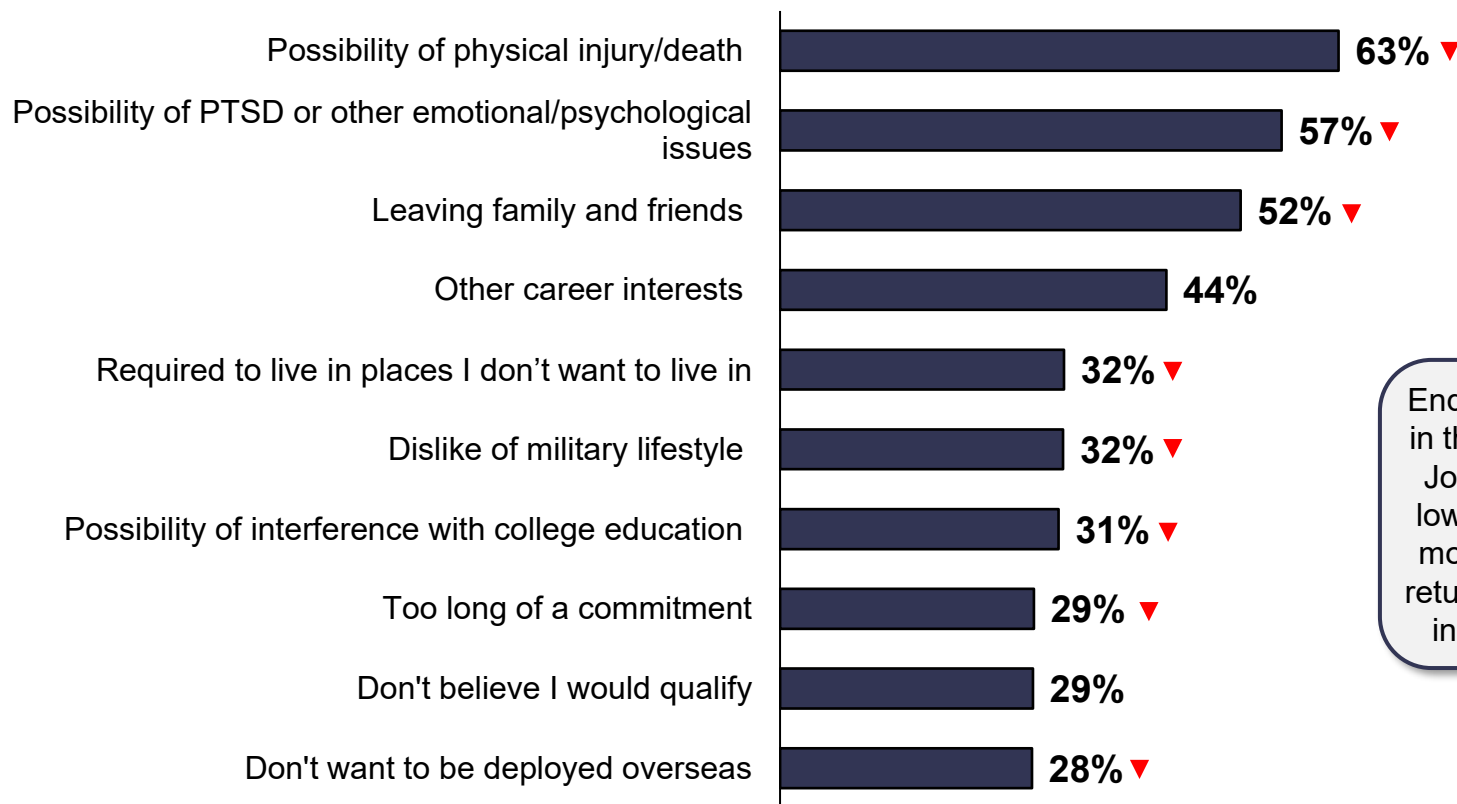
▲ ▼ = Significant change compared to previous wave

Question: RTJ: "If you were to consider joining the U.S. Military, what would be the main reason(s)? (Mark all that apply.)"

Barriers to Service: Reasons Not to Join

What would be the main reason(s) why you would NOT consider joining the U.S. Military?

Top 10 Reasons



Endorsement of items in the Reasons Not to Join battery is often lower in the Summer module and typically return to normal levels in the Fall module.

Note: Youth ages 16–21.

Source: DoD Youth Poll (Summer 2024)

JAMRS

▲ ▼ = Significant change compared to previous wave

Question: RNTJ: "What would be the main reason(s) why you would NOT consider joining the U.S. Military? (Mark all that apply.)"

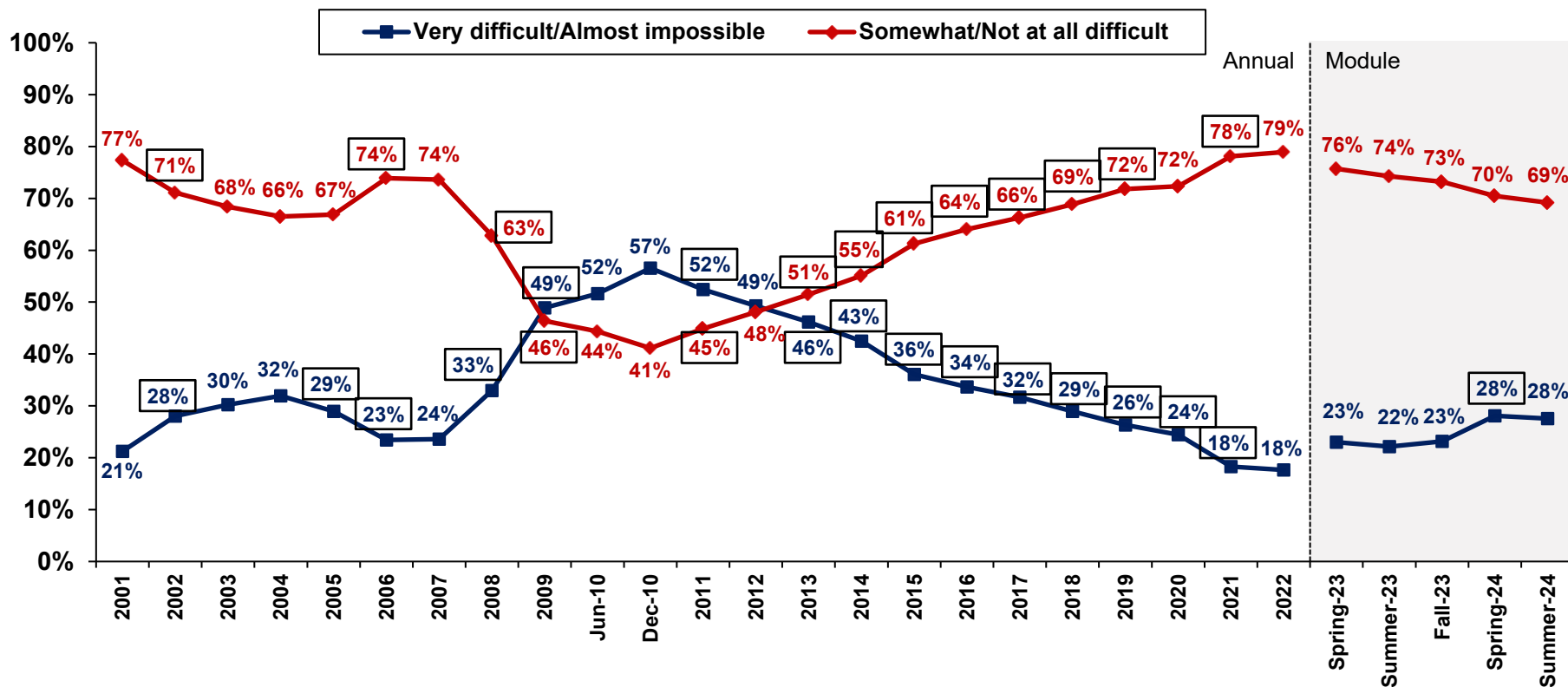
Economic Factors

U.S. Military and Economic Conditions

Difficulty Finding a Job

- The proportion of youth who say that it is difficult to find a job in Summer 2024 remained stable compared to Spring 2024 but has been gradually rising since 2022.

How difficult is it for someone your age to get a full-time job in your community?



Note: Youth ages 16–21. Estimates are charted to precise values. Labels are rounded to the nearest whole percent.

Source: DoD Youth Poll

JAMRS

□ = Significant change from previous poll/year

Backup

Youth Poll Methodology and Sample

- Mail-based survey fielded from April 29, 2024, to October 31, 2024.
 - A series of five mailings were sent to eight different cohorts semimonthly that invited recipients to participate.
- Final Youth Poll Sample: 5,137 youths ages 16 through 24
 - 3,968 (77%) youths ages 16 through 21—the metrics presented herein focus on this age group.
 - 1,169 (23%) youths ages 22 through 24
- Weighted to reflect the general population on several dimensions:
 - Gender
 - Age
 - Race/Ethnicity
 - Educational attainment
 - Region
- Stratified Random Sample
- Note: Estimates are charted to precise values. Labels are rounded to the nearest whole percent.

Overview of Youth Poll Annual Data

Starting in Summer 2024, the Propensity Update now presents aggregated, annual reporting of trended data, rather than presenting it by each module.

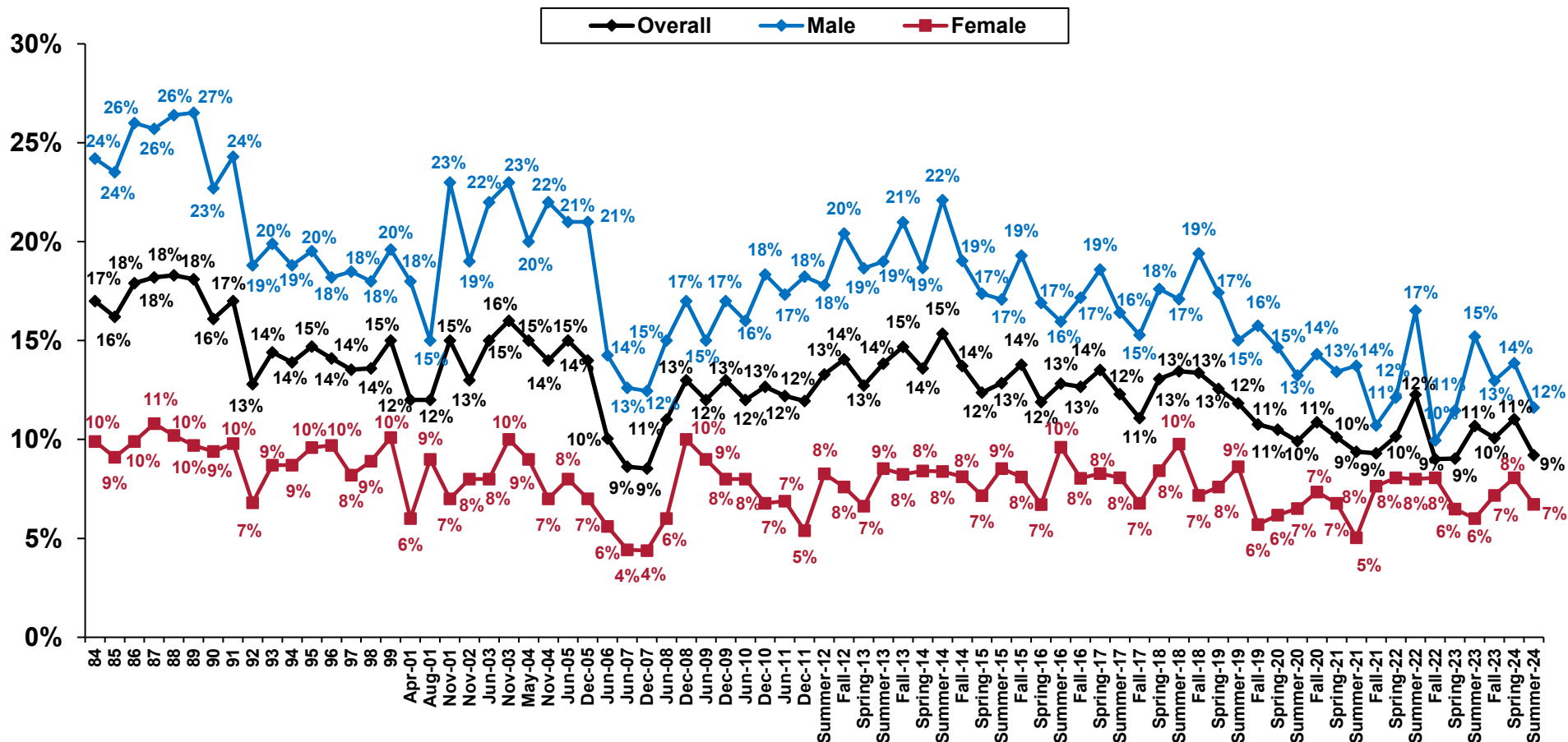
- The Youth Poll used the following survey administration methodologies:
 - 2001–June 2010: Telephone survey using random digit dialing (RDD) conducted semiannually.
 - December 2010–2011: Mail-based paper survey conducted semiannually.
 - 2012–2024: Continuously fielded mail-based paper survey distributed every 4 months and fielded for 6 months (January–June, May–October, September–February).
- The annual data set creation process included the following steps.
 - 2001–2013: Annual data sets were created by combining a calendar year's worth of module data sets. June 2010 and December 2010 data sets were not combined due to the change in survey methodology. Data sets for 2002 and 2006 only include one wave of data each.
 - 2014–Present: Annual data sets were created by combining a calendar year's worth of module data sets. Then, the combined data sets were reweighted to be representative at the state-level.
- All available data are reported.
 - Note: Specific instances when data were collected but are not reported are explicitly noted.
- Significance testing was not conducted when comparing:
 - Data across different methodologies (e.g., between June 2010 and December 2010 and between 2011 and 2012).
 - Annual-level and module-level data (e.g., 2022 and Spring 2023).

Historical General Military Propensity

By Gender

In the next few years, how likely is it that you will be serving in the Military?

% Definitely/Probably



Note: Youth ages 16–21. Estimates are charted to precise values. Labels are rounded to the nearest whole percent.

Source: DoD Youth Attitude Tracking Survey (YATS) and Youth Poll



Questions: YATS (Q503)—Jun-10 (FPP9): "Now, I'd like to ask you how likely it is that you will be serving in the Military in the next few years?"

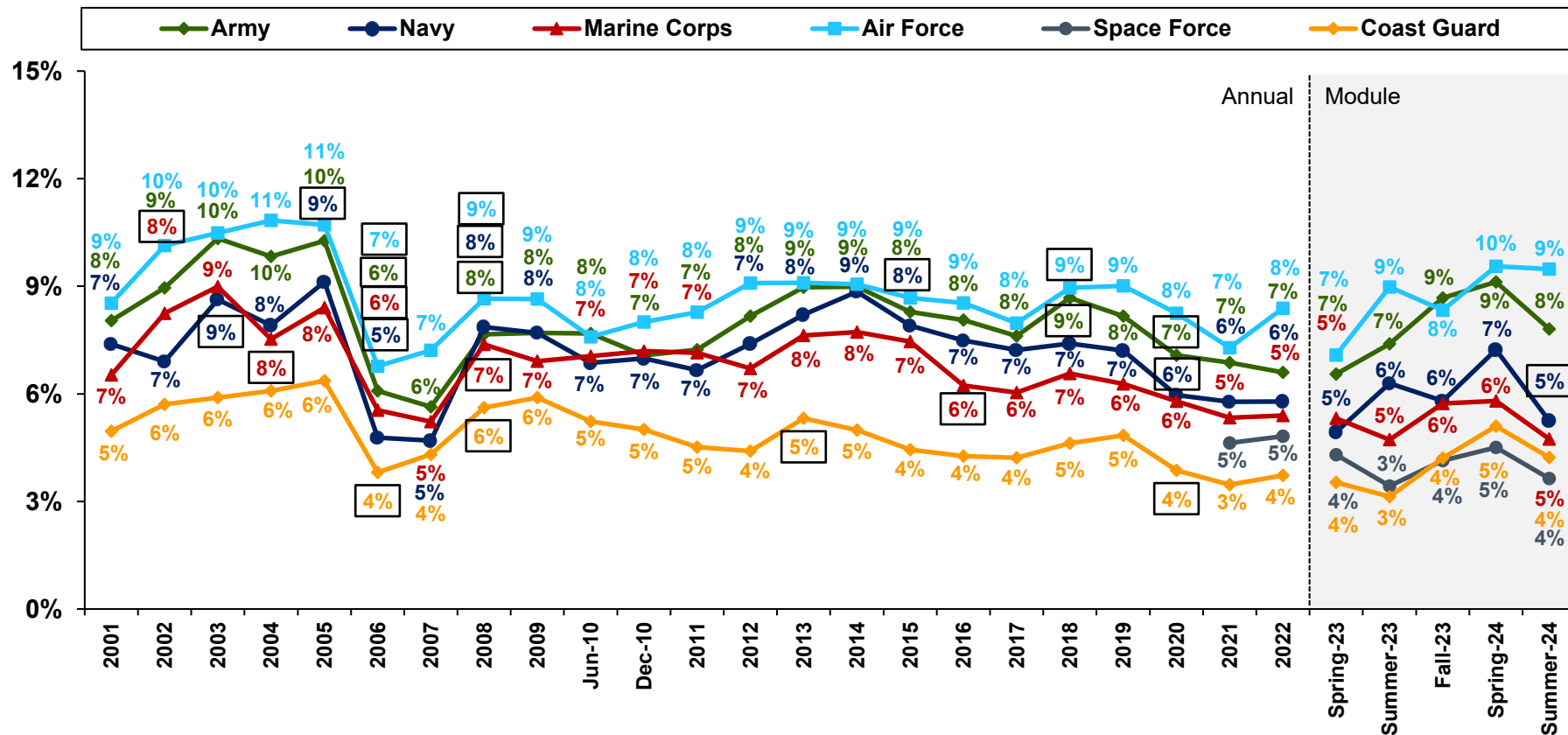
Dec-10—Onwards (FPP9): "In the next few years, how likely is it that you will be serving in the Military?" Response options: Definitely, Probably, Probably Not, Definitely Not

Note: Survey items were developed prior to Executive Order 14168 "Defending Women from Gender Ideology Extremism and Restoring Biological Truth to the Federal Government" and used the term "gender" interchangeably with "sex" to describe males and females. Future survey items will collect data using a question that asks about participant sex with response options "Male" and "Female."

Active Duty Propensity by Service

In the next few years, how likely is it that you will be serving
in any of the following Military Services?

% Definitely/Probably



Note: Youth ages 16–21. Estimates are charted to precise values. Labels are rounded to the nearest whole percent.

Source: DoD Youth Poll

JAMRS

□ = Significant change from previous poll/year

14

Question: FPP10A–FPP10F: “In the next few years, how likely is it that you will be serving in any of the following Military Services?” Response options: Definitely, Probably, Probably Not, Definitely Not

Note: Space Force was added in Summer 2020. Reporting begins in 2021, which is the first full year of data available.