



# Spring 2021 Propensity Update

**SLIDES ONLY**  
**NO SCRIPT PROVIDED**

**CLEARED**  
**For Open Publication**

May 12, 2022

Department of Defense  
OFFICE OF PREPUBLICATION AND SECURITY REVIEW

**JAMRS**

*Public Release*



# Youth Poll: Propensity

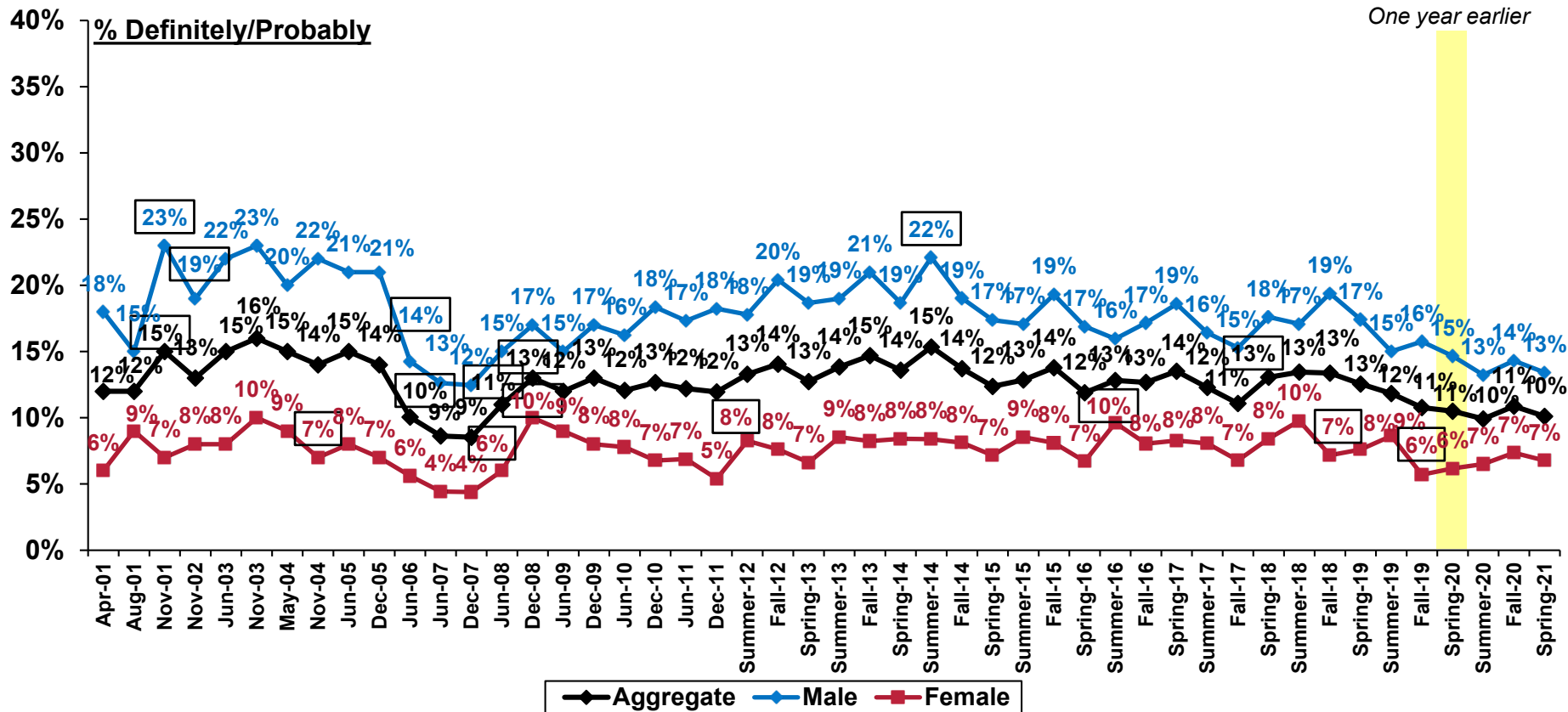
# General Military Propensity

## By Gender

**FPP9: In the next few years, how likely is it that you will be serving in the Military?**

Response options: Definitely, Probably, Probably Not, Definitely Not

- Military propensity remained low and stable between Fall 2020 and Spring 2021 at an aggregate level and across gender subgroups.



Note: Youth ages 16–21. Estimates are charted to precise values. Labels are rounded to the nearest whole percent.

Source: DoD Youth Poll



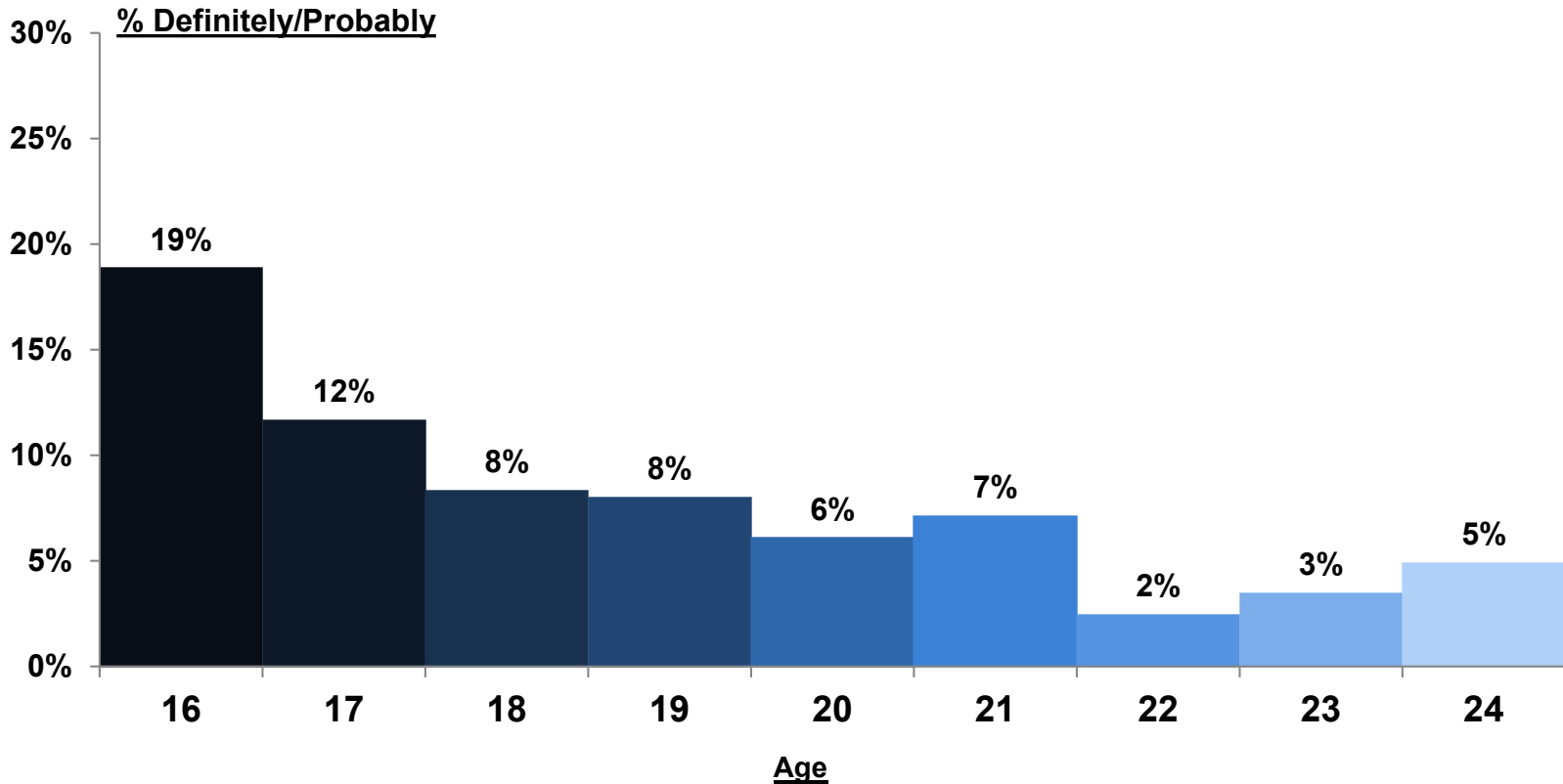
□ = Significant change from previous poll

# General Military Propensity

## By Age

**FPP9: In the next few years, how likely is it that you will be serving in the Military?**

Response options: Definitely, Probably, Probably Not, Definitely Not



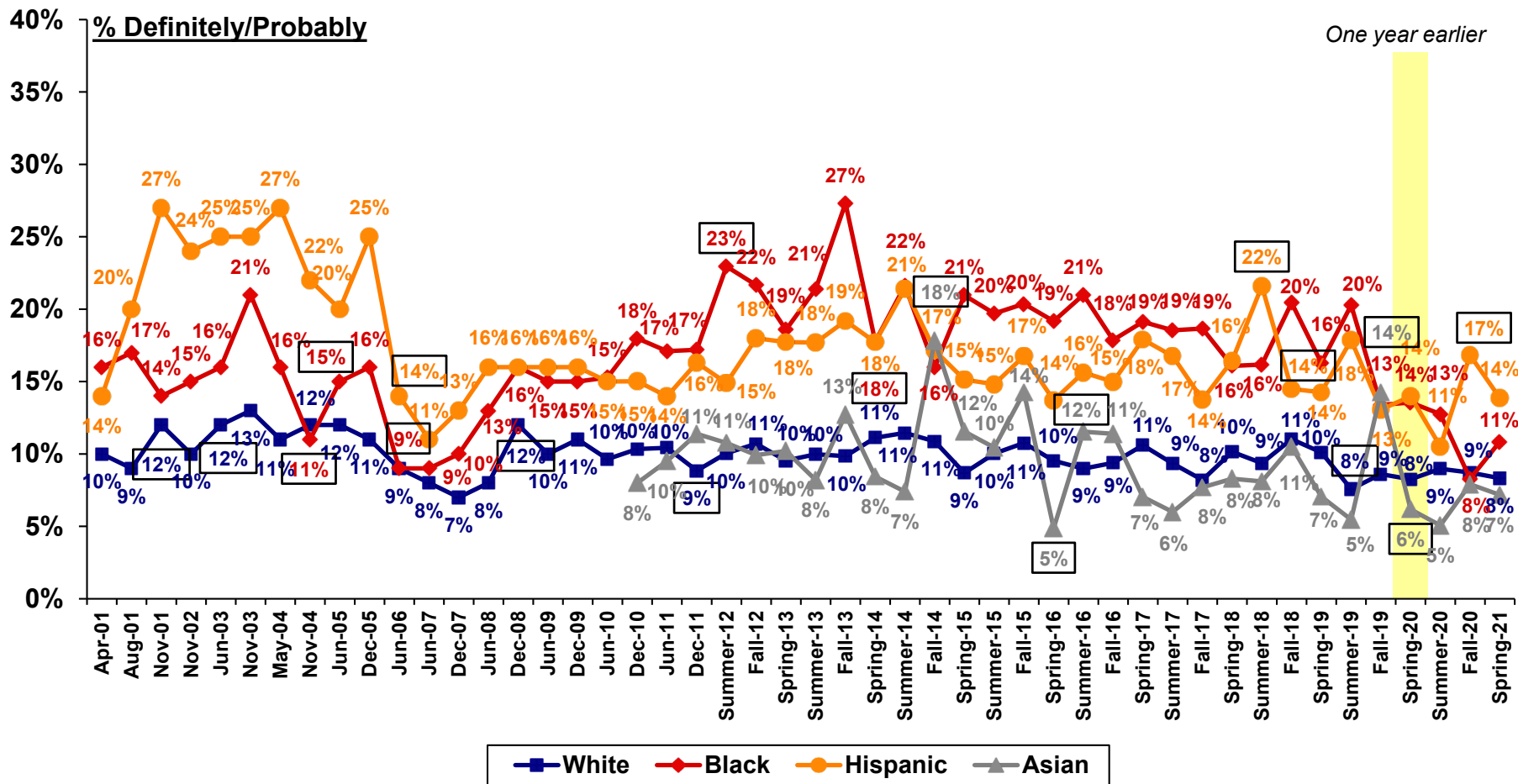
Note: Estimates are charted to precise values.  
Labels are rounded to the nearest whole percent.  
Source: DoD Youth Poll (Spring 2021)

# General Military Propensity

## By Race/Ethnicity

**FPP9: In the next few years, how likely is it that you will be serving in the Military?**

Response options: Definitely, Probably, Probably Not, Definitely Not



Note: Youth ages 16–21. Estimates are charted to precise values. Labels are rounded to the nearest whole percent.

Source: DoD Youth Poll



☐ = Significant change from previous poll

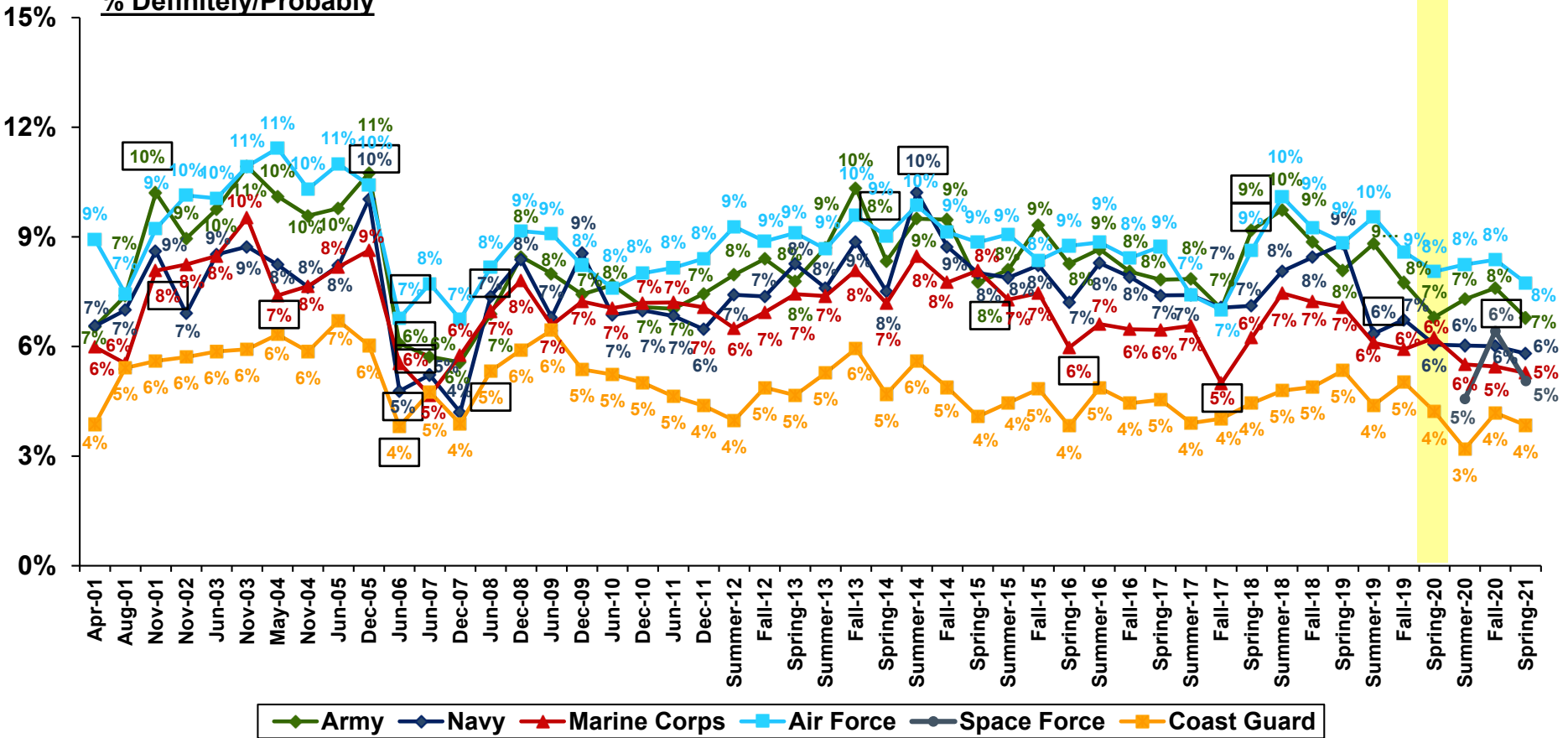
Note: Estimates for Black and Asian youth should be interpreted with caution because of relatively large margins of error.

# Active Duty Propensity by Service

**FPP10A\_Q–FPP10F\_Q: In the next few years, how likely is it that you will be serving in any of the following Military Services?**

Response options: Definitely, Probably, Probably Not, Definitely Not

**% Definitely/Probably**



Note: Youth ages 16–21. Estimates are charted to precise values. Labels are rounded to the nearest whole percent.  
 Source: DoD Youth Poll



☐ = Significant change from previous poll



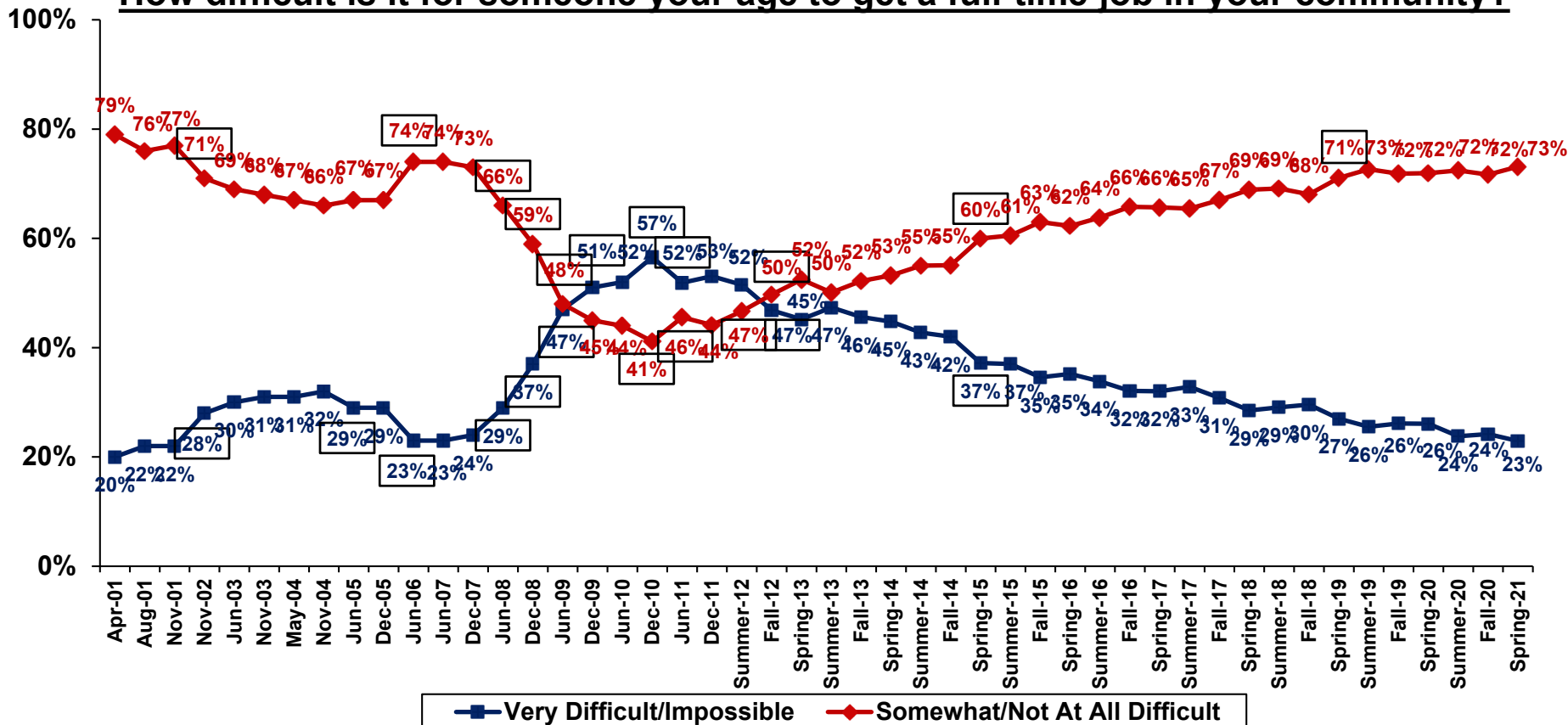
# Youth Poll: Economic Conditions

# U.S. Military and Economic Conditions

## Difficulty of Finding a Job

- Youth have continued to remain confident in their ability to get a full-time job within their communities over the past year.

### How difficult is it for someone your age to get a full-time job in your community?



Note: Youth ages 16–21. Estimates are charted to precise values. Labels are rounded to the nearest whole percent.

Source: DoD Youth Poll



☐ = Significant change from previous poll



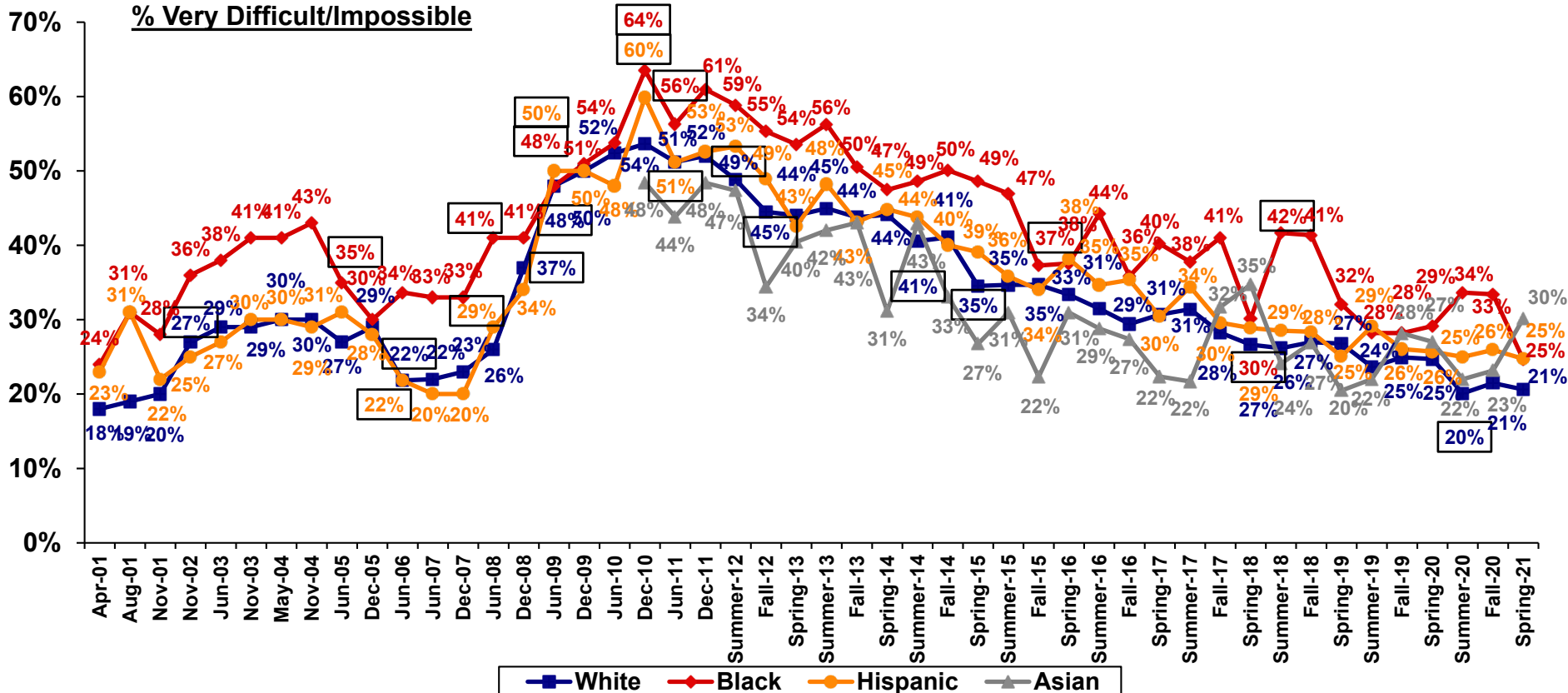
# U.S. Military and Economic Conditions

## Difficulty of Finding a Job

- Youths' perceptions of difficulty finding a full-time job remained relatively stable across racial/ethnic subgroups from Fall 2020 to Spring 2021.

### How difficult is it for someone your age to get a full-time job in your community?

**% Very Difficult/Impossible**



Note: Youth ages 16–21. Estimates are charted to precise values. Labels are rounded to the nearest whole percent.

Source: DoD Youth Poll



   = Significant change from previous poll

Note: Estimates for Black and Asian youth should be interpreted with caution because of relatively large margins of error. EMP5: "How difficult is it for someone your age to get a full-time job in your community?"



# Backup

# Youth Poll Methodology and Sample

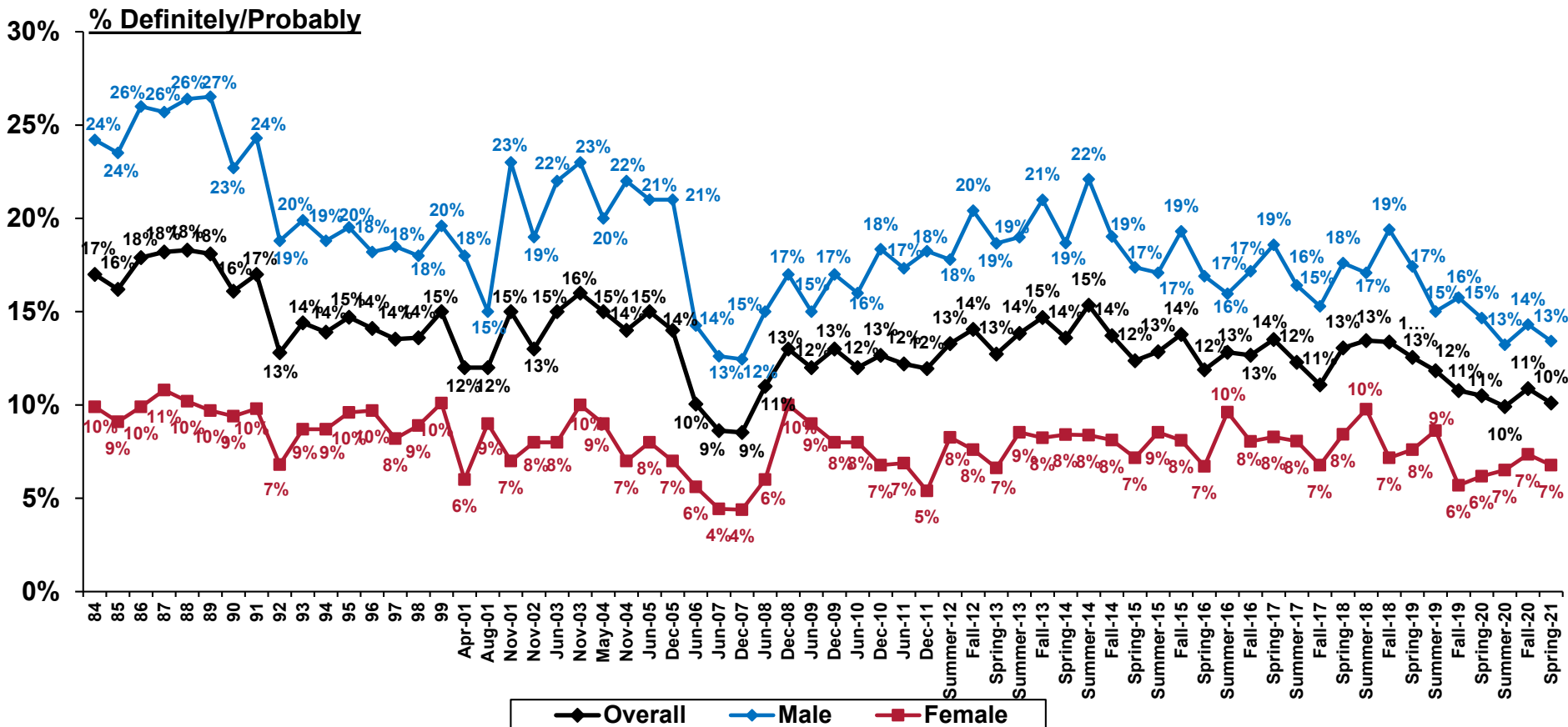
- Mail-based survey fielded from December 31, 2020, to June 30, 2021.
  - A series of five mailings were sent to eight different cohorts semimonthly that invited recipients to participate.
- Final Youth Poll Sample: 4,423 youths ages 16 through 24
  - 3,529 (80%) youths ages 16 through 21—the metrics presented herein focus on this age group.
  - 894 (20%) youths ages 22 through 24
- Weighted to reflect the general population on several dimensions:
  - Gender
  - Age
  - Race/Ethnicity
  - Educational attainment
  - Region
- Stratified Random Sample
- Note: Estimates are charted to precise values. Labels are rounded to the nearest whole percent.
- Note: Certain slides provide estimates by race/ethnicity.
  - The December 2010 effort was the first Youth Poll with a sufficiently large enough sample size to report estimates for Asian youth. Asian youth estimates are included only at the overall level and not by gender because of sample size restrictions. The effective sample size for Asian youth is small, and results should be interpreted cautiously.

# Historical General Military Propensity

## By Gender

**FPP9: In the next few years, how likely is it that you will be serving in the Military?**

Response options: Definitely, Probably, Probably Not, Definitely Not



Note: Youth ages 16–21. Estimates are charted to precise values. Labels are rounded to the nearest whole percent.

Source: DoD Youth Attitude Tracking Survey (YATS) and Youth Poll

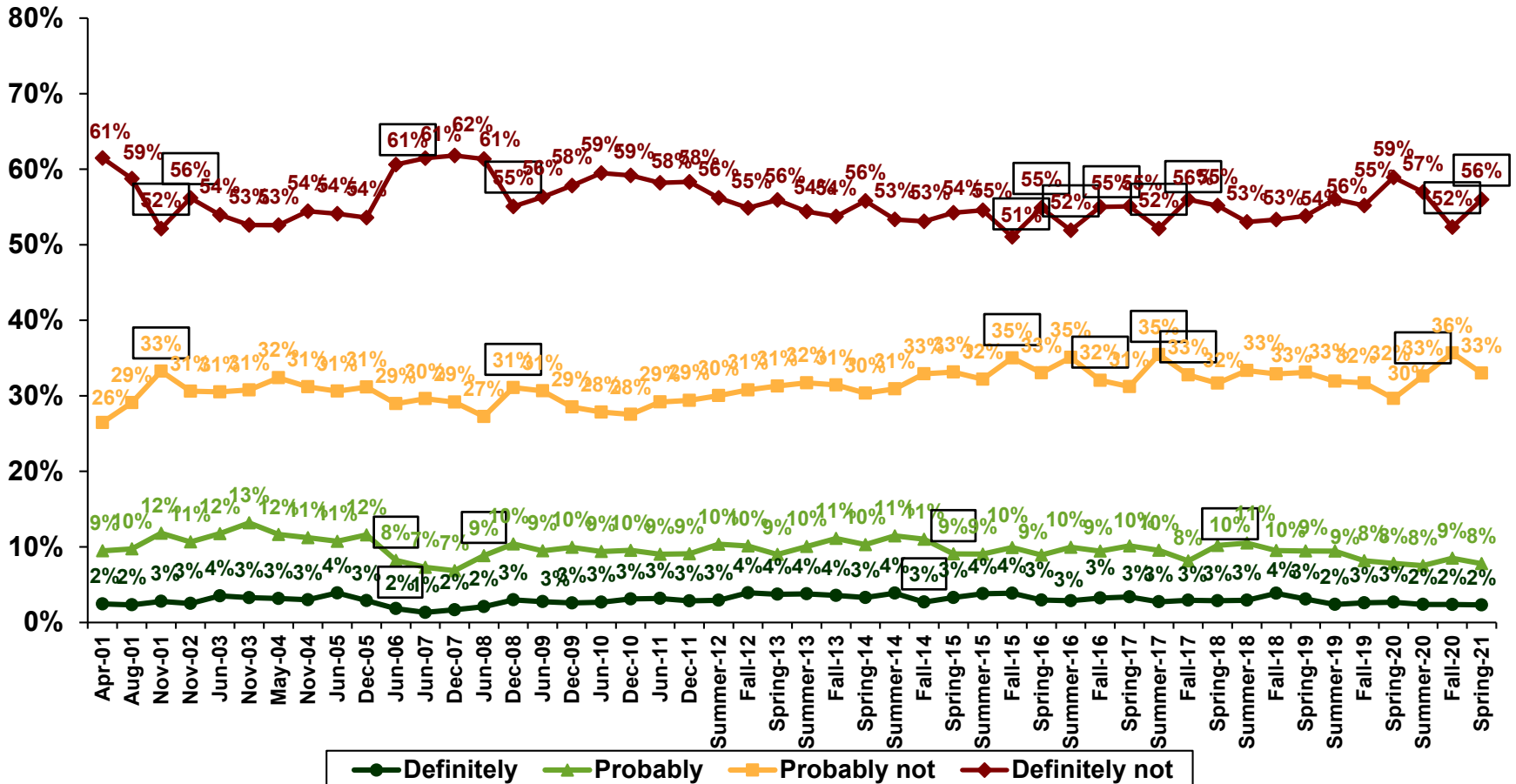


Questions: YATS (Q503)–Jun-10 (FPP9): “Now, I’d like to ask you how likely it is that you will be serving in the Military in the next few years?”  
Dec-10–Onwards (FPP9): “In the next few years, how likely is it that you will be serving in the Military?”

# General Military Propensity

## FPP9: In the next few years, how likely is it that you will be serving in the Military?

Response options: Definitely, Probably, Probably Not, Definitely Not



Note: Youth ages 16–21. Estimates are charted to precise values. Labels are rounded to the nearest whole percent.

Source: DoD Youth Poll



☐ = Significant change from previous poll

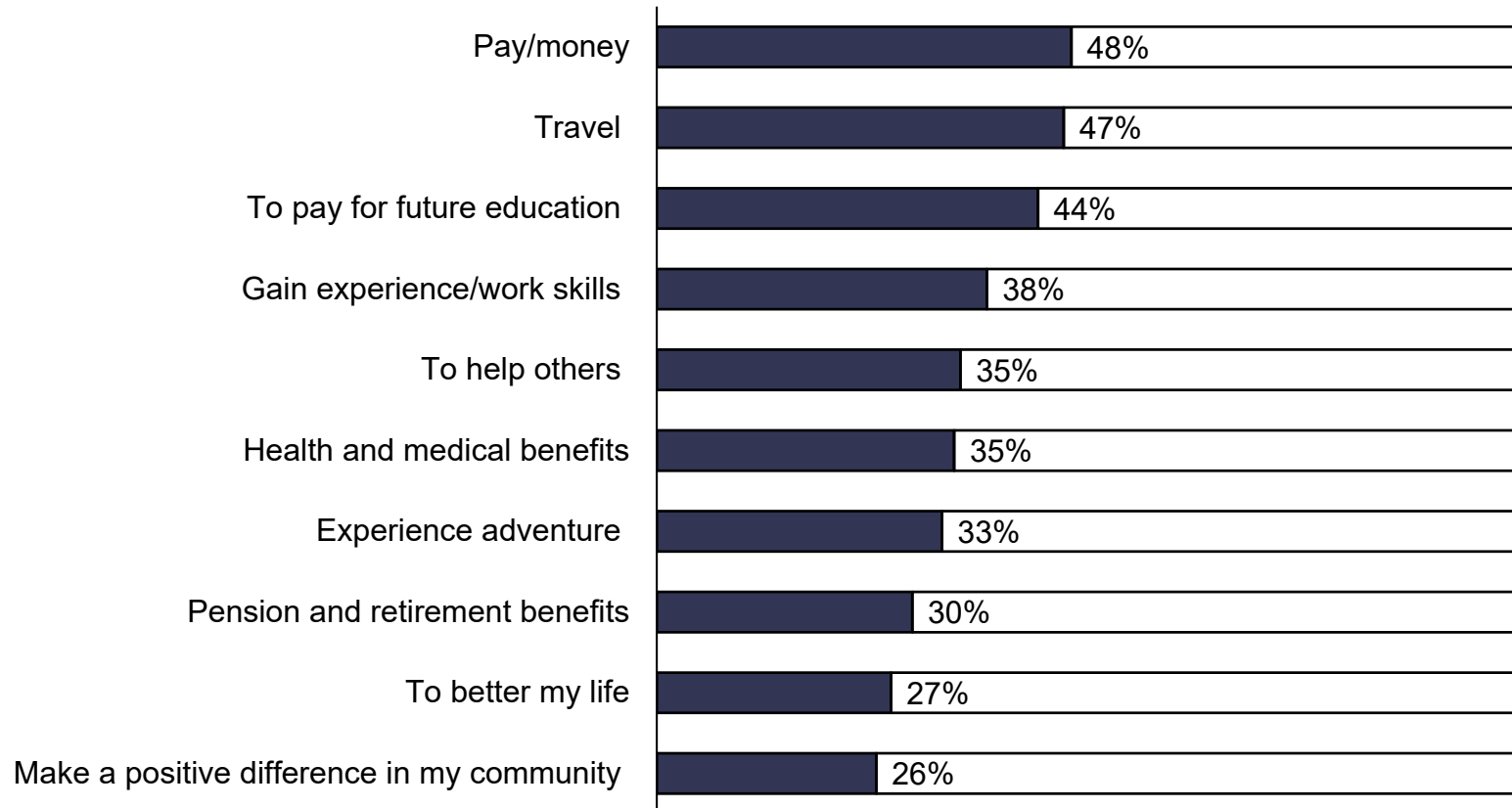
Questions: Apr-01–Jun-10 (FPP9): “Now, I’d like to ask you how likely it is that you will be serving in the Military in the next few years?”  
 Dec-10–Onwards (FPP9): “In the next few years, how likely is it that you will be serving in the Military?”

# Reasons to Join

**RTJ: if you were to consider joining the U.S. Military, what would be the main reason(s)?**

Response options: Yes, multiple response

## Top 10 Reasons



Note: Youth ages 16–21.

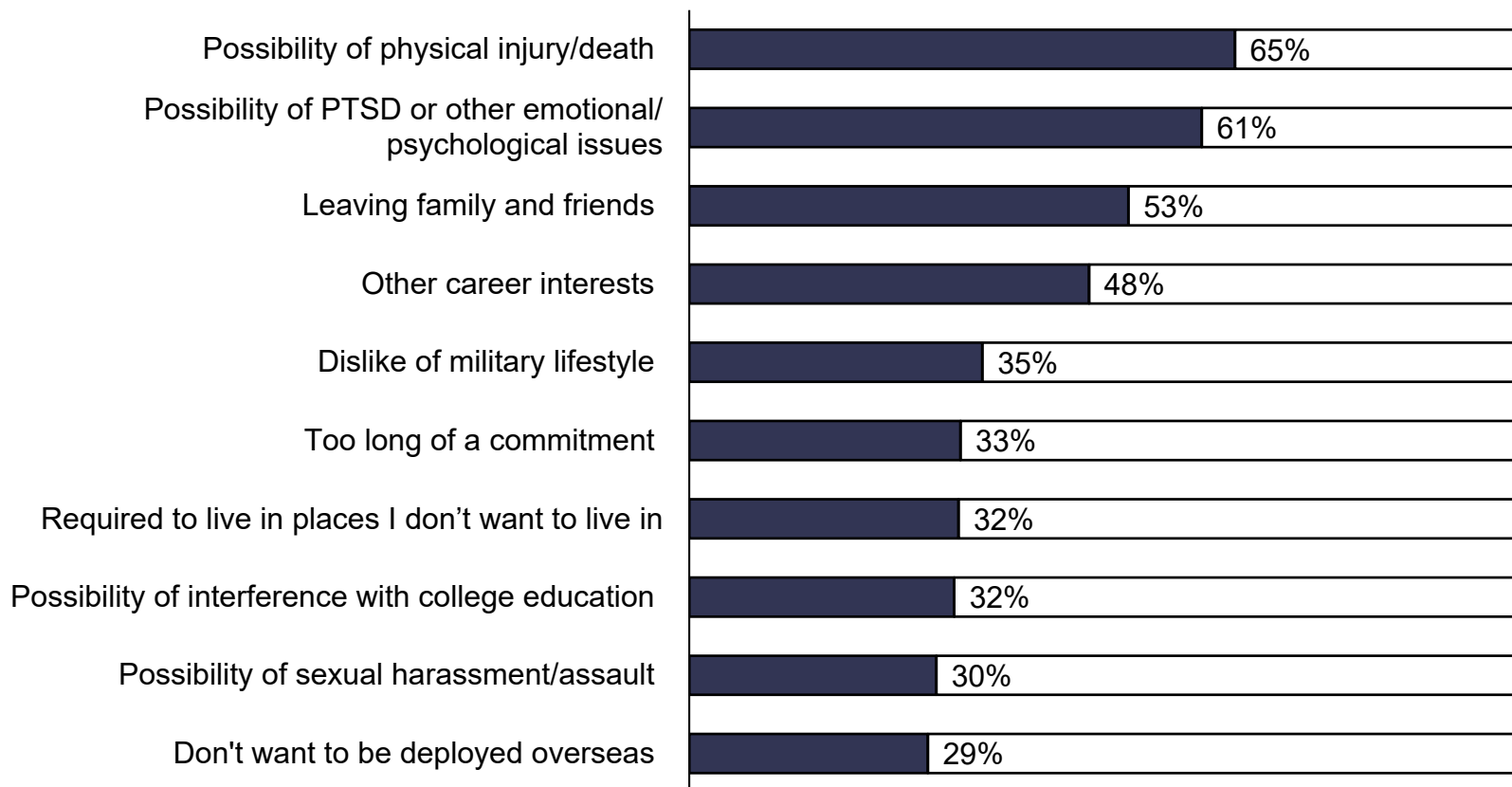
Source: DoD Youth Poll (Spring 2021)

# Reasons Not to Join

## **RNTJ: What would be the main reason(s) why you would NOT consider joining the U.S. Military?**

Response options: Yes, multiple response

### Top 10 Reasons



Note: Youth ages 16–21.

Source: DoD Youth Poll (Spring 2021)